

Derry Hill and Studley Parish Council

Parish Council Overview



Contents

1. Derry Hill and Studley Parish Council.....	2
2. Derry Hill and Studley Parish Councillors – by Ward.....	5
3. Parish Council Committee and Working Group Structure.....	6
4. Outside Bodies on which the Parish Council has representation or works with	11
5. Assets held by the Derry Hill and Studley Parish Council.....	15
Appendix The civil parish of Derry Hill and Studley	18

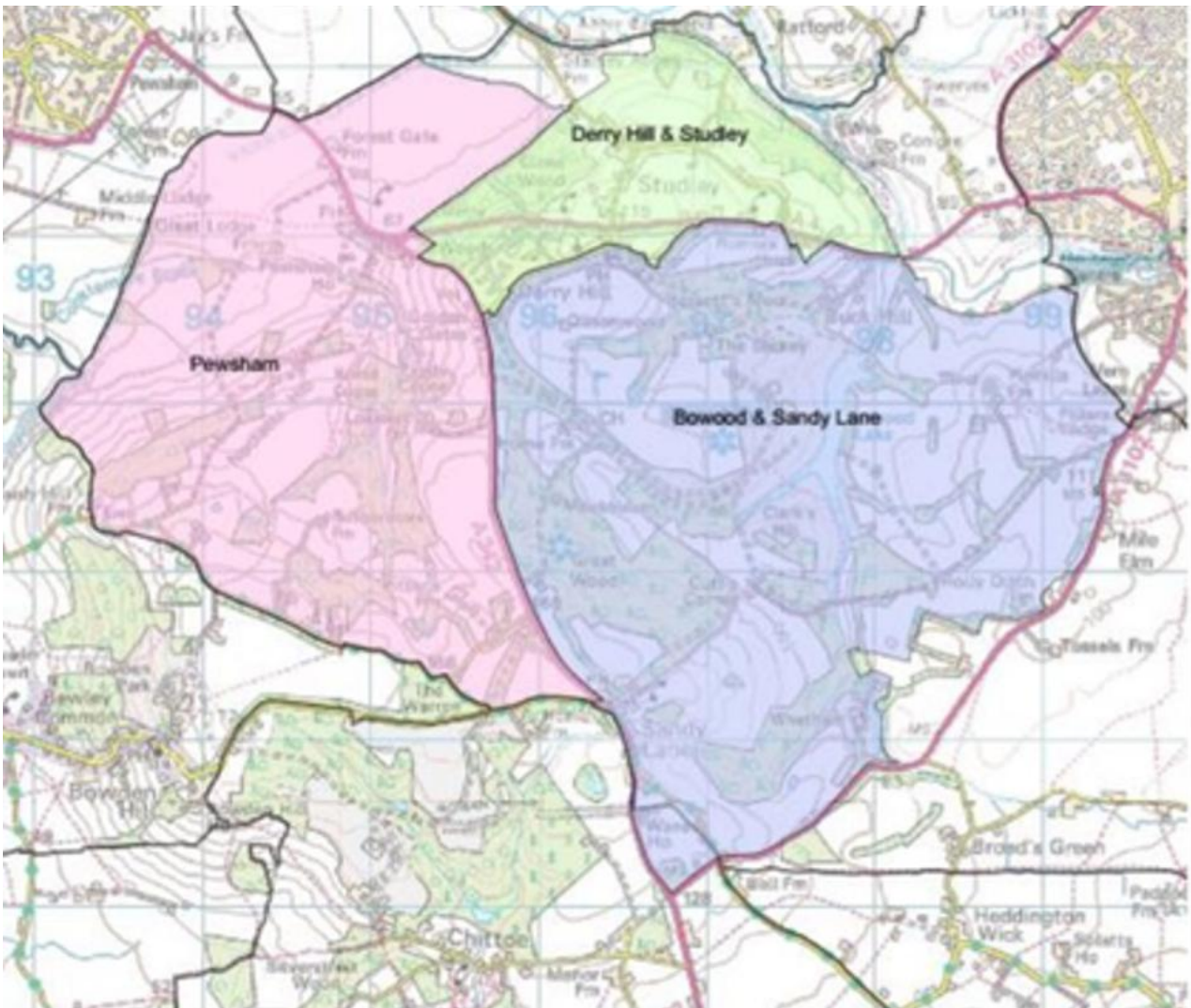
1. Derry Hill and Studley Parish Council.

The parish comprises the three wards of Derry Hill and Studley, Bowood and Sandy Lane and Pewsham:

Pewsham ward which covers Pewsham, Old Derry Hill, houses along the Devizes Road and Naish Hill, and is represented by one councillor.

Bowood and Sandy Lane ward, which is represented by one councillor.

Derry Hill and Studley ward, which is represented by nine parish councillors.



Pewsham ward – pink, Derry Hill & Studley ward – green and Bowood Estate and Sandy Lane ward - Blue

In 2025, parts of the former parish of Calne Without moved into other parishes, with the western part becoming Derry Hill and Studley Parish.

A parish council is a civil local authority found in England and is the first tier of local government. Parish councils are elected corporate bodies, with variable tax raising powers, and they carry out beneficial public activities in geographical areas known as civil parishes.

Most Parish Councils receive the majority of their funding by levying a precept upon the council tax paid by the residents of the parish covered by the council.

A Parish Council's activities fall into three main categories: representing the local community, delivering services to meet local needs, and improving quality of life and community well-being.

Parish Councils, in England, are legally required to appoint a properly qualified officer, commonly known as a Parish Clerk whose role covers:

- Ensuring that Parish Council business is conducted lawfully
- Managing the financial records (serving as the Responsible Financial Officer, or RFO).
- Acting as the "proper officer" for legal documents and summonses for meetings.
- Managing administration
- Providing objective advice
- Managing council resources

In the absence of a clerk, a council cannot legally function, as meetings require a summons from the proper officer. As part of her role the Derry Hill and Studley Parish Clerk also edits the Inspire magazine, which is distributed to all households within the parish.

The Derry Hill and Studley Parish Clerk, Katherine Checchia, holds the Certificate in Local Council Administration, and, as more than two thirds of councillors are elected, the council can use the "General power of Competence" which allows the Council wider freedoms as it gives councils the power to do anything an individual can do provided it is not prohibited by other legislation.

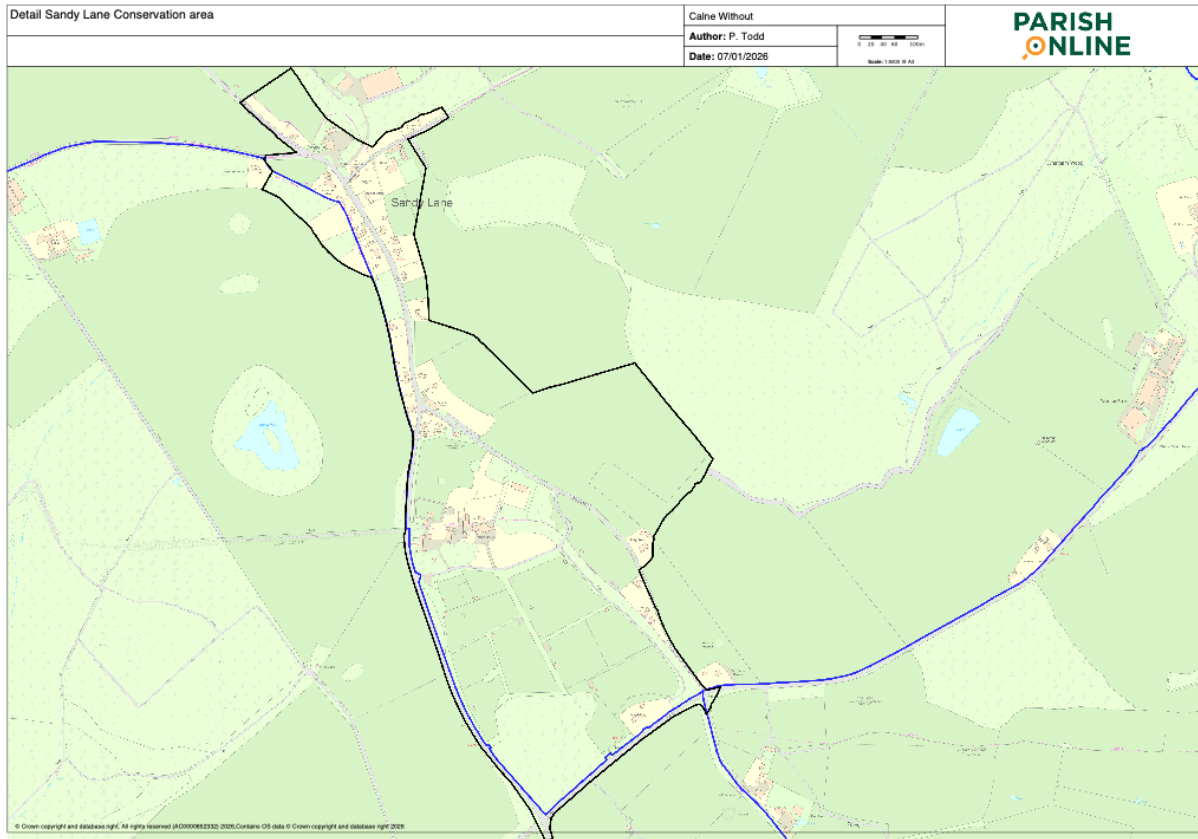
The core values of the Derry Hill and Studley Parish Council are:

- Innovation – Encouraging creativity, embracing change, and striving for continuous improvement.
- Respect – Valuing diversity, treating others with dignity and fostering an inclusive environment.
- Collaboration – Working together across groups and committees to achieve shared objectives and initiatives.
- Integrity – Acting honestly and ethically in all our business dealings.
- Accountability – Taking responsibility for actions, decisions and outcomes.
- Sustainability – Committing to environmentally responsible practices, financial prudence and long term societal wellbeing.
- Community focus – Prioritising the needs of the community.
- Openness and Transparency – We will be open and transparent in the way we conduct our business.

The core objectives of the Derry Hill and Studley Parish Council are:

- To provide value-for-money services to meet the needs of the Community.
- To foster community cohesion through local groups and organisations.
- To work with the local authority to improve road safety within the Parish.
- To reduce the Community's impact on the environment.
- To maintain our footpaths and bridleways.
- To promote and apply our Neighbourhood Plan in planning matters.
- To engage with the community, keeping them informed of issues that affect them.
- To build community resilience.

Derry Hill and Studley Parish Council is a signatory to the NALC (National Association of Local Councils) Civility and Respect pledge



Sandy Lane Conservation area

2. Derry Hill and Studley Parish Councillors – by Ward

The last election was in May 2025 and will be repeated in 2029

Ward	Area covered by the Ward	Electorate (December 2025)	Number of councillors	Councillors 2026 (C)= Chairman (VC)= Vice Chairman
Pewsham	Old Derry Hill, Pewsham, Naish Hill area, houses along the Devizes Road	164	1	John Barnes (C)
Bowood and Sandy Lane	The Bowood Estate and Sandy Lane	113	1	Lord Kerry
Derry Hill and Studley	Derry Hill and Studley	1101	9	Bruce MacInnes, Philippa Todd (VC), Andrew Turton, Martin Handyside, Jean Spence, Claire Willaims, Vaughan Mizon, Nathan Errington 1 vacancy

Contact details for each of the councillors can be found on the parish council website:

<http://derryhillandstudley-pc.gov.uk>.

3. Parish Council Committee and Working Group Structure

To aid productivity and responsiveness, the work of the parish council is split into several Committees and Working Groups, as shown below. Committees are open to the public and all documents are available online. The working Groups typically work on specific topics, and their output is presented to the main council meetings and is available to the public then. Working Groups are more informal and are therefore not subject to the same levels of transparency as Committees. Working Groups cannot make decisions, they can only report and make recommendations to the Council. Whilst the Working Group's meetings are not open to the general public, they may include members of the public such as subject experts or volunteer members.

The position of Chair, and Vice Chair of the council, and membership of all Committees and Working groups is reviewed annually in May. The councillors vote for the Chair and Vice Chair and approve the membership of Committees and Working groups.

Committees

(a) Finance Committee;

Aims & Objectives:

- To ensure adequate financial controls are in place to utilise and protect the Council's finances and assets – to include insurance of buildings and property and maintenance of the asset register.
- To monitor and effect compliance with laid down internal and external audit and other financial procedures, regulations, and statutes.
- To monitor the Council's investments to ensure a competitive level of return at a minimal level of risk and to make recommendations, as required, to the Main Council.
- To monitor the Council's financial risk assessments and recommend changes where necessary.
- To prepare the annual plan/budget and precept for consideration and approval by the Main Council; to support the development of a Strategic Plan by the Council and to prepare a four-year rolling financial plan to support the delivery of the Strategic Plan.
- To maintain financial oversight of agreed projects and activities, within the limits of the approved budget or any financial authority specifically delegated from the main council and where required prepare reports and advice for consideration by the full council.
- To monitor routine expenditure by the council, the realisation of the associated benefits and the associated financial returns and reports.
- To maintain oversight of Community Infrastructure Levy (CIL) receipts and expenditure to ensure provision is expended effectively and efficiently within the policy established by the Council.

Minimum 5 members required, The Chair and Vice-Chair of Council have automatic seats.

Members: May 2025 – May 2026:

Cllr John Barnes - Chair
Cllr Vaughan Mizon
Cllr Bruce MacInnes
Cllr Philippa Todd
Cllr Andrew Turton

(b) Human Resources Committee;

Aims & Objectives:

- To meet legislative requirements.
- To provide administration management in respect of employment of staff by the Parish Council.
- To ensure good governance.
- To ensure that the processes and actions enable the council to remain a good employer and a good organisation to work for.
- To ensure that the Clerk and Councillors are appropriately trained to fulfil their responsibilities.

Minimum 4 members required, The Chair and Vice Chair of Council have automatic seats.

Members: May 2025 – May 2026

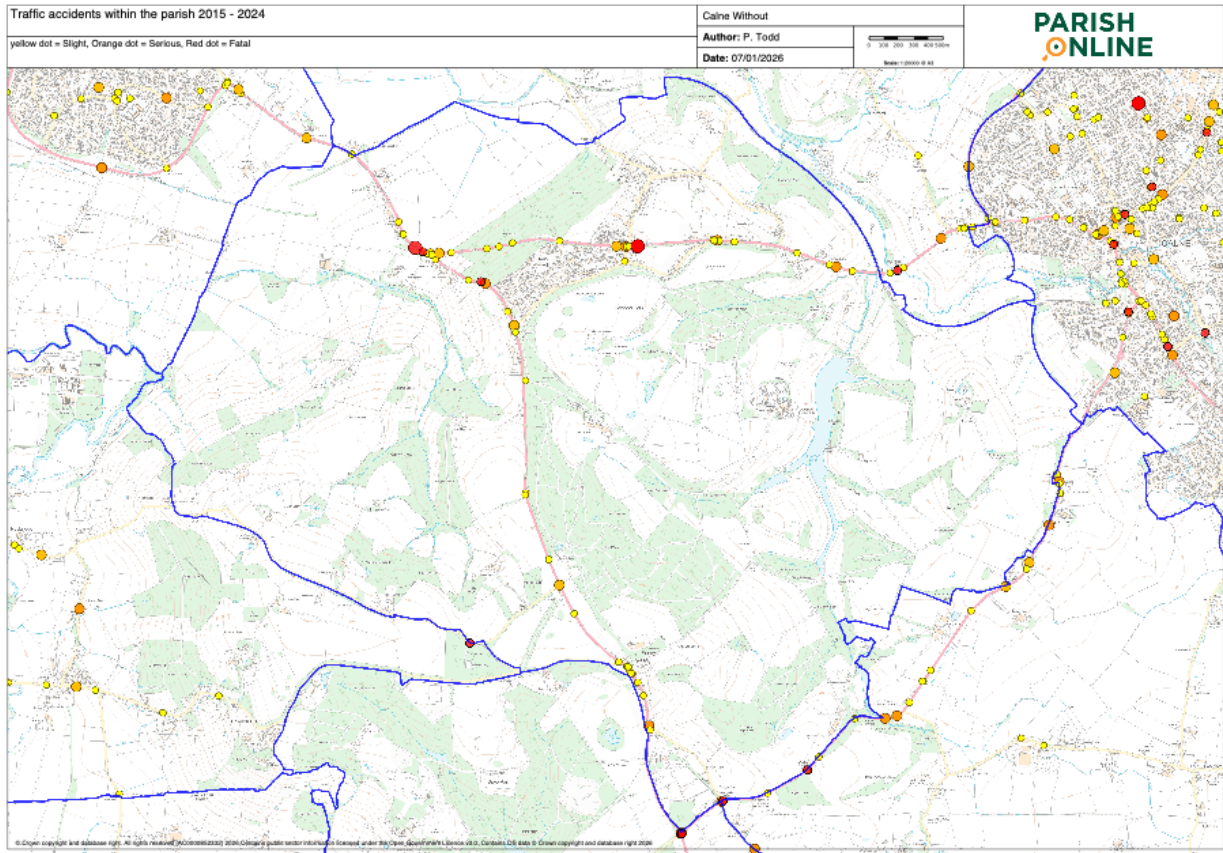
Cllrs John Barnes
Cllr Philippa Todd
Cllr Claire Williams - Chair
Cllr Martin Handyside
Cllr Andrew Turton

Working groups

(a) Highways, Transport and Road Safety Working Group;

Aims & Objectives:

- To project manage the implementation of recommendations from the Road Safety Feasibility Study commissioned by Calne Without Parish Council.
- To manage the continuing deployment and maintenance of the Council's two Speed Indicator Devices.
- To consider further measures to mitigate speeding, including liaison with the police for enforcement and the potential establishment of Community Speedwatch schemes where appropriate.
- Further develop the cycle network in Derry Hill and Studley parish.
- Consider and address further issues relating to road safety, highways, parking and public transport matters as and when they're brought to the attention of the Parish Council.



Traffic accidents within the parish between 2015 and 2024
Yellow dot = slight, orange dot = serious, red dot = fatal

Members: May 2025 – May 2026

- Cllr John Barnes
- Cllr Vaughan Mizon
- Cllr Andrew Turton - Chair

(b) Engagement and Participation working group.

Aims & Objectives

- To encourage greater public understanding and engagement in the work of the Parish Council
- To encourage greater participation in the work of the Parish Council.
- To make recommendations to the council on how to increase public understanding of the aims and purpose of the Parish Council, and greater engagement in the work of the council.
- To support the Clerk in her role as Editor of Inspire magazine.
- To manage the editorial, advertising and distribution policies associated with Inspire magazine and to review them annually.

Members: May 2025 – May 2026

- Cllr Claire Williams
- Cllr Martin Handyside
- Cllr Vaughan Mizon

Cllr Andrew Turton
Cllr Jean Spence
Cllr Philippa Todd - Chair

(c) Footpaths and Rights of Way working group.

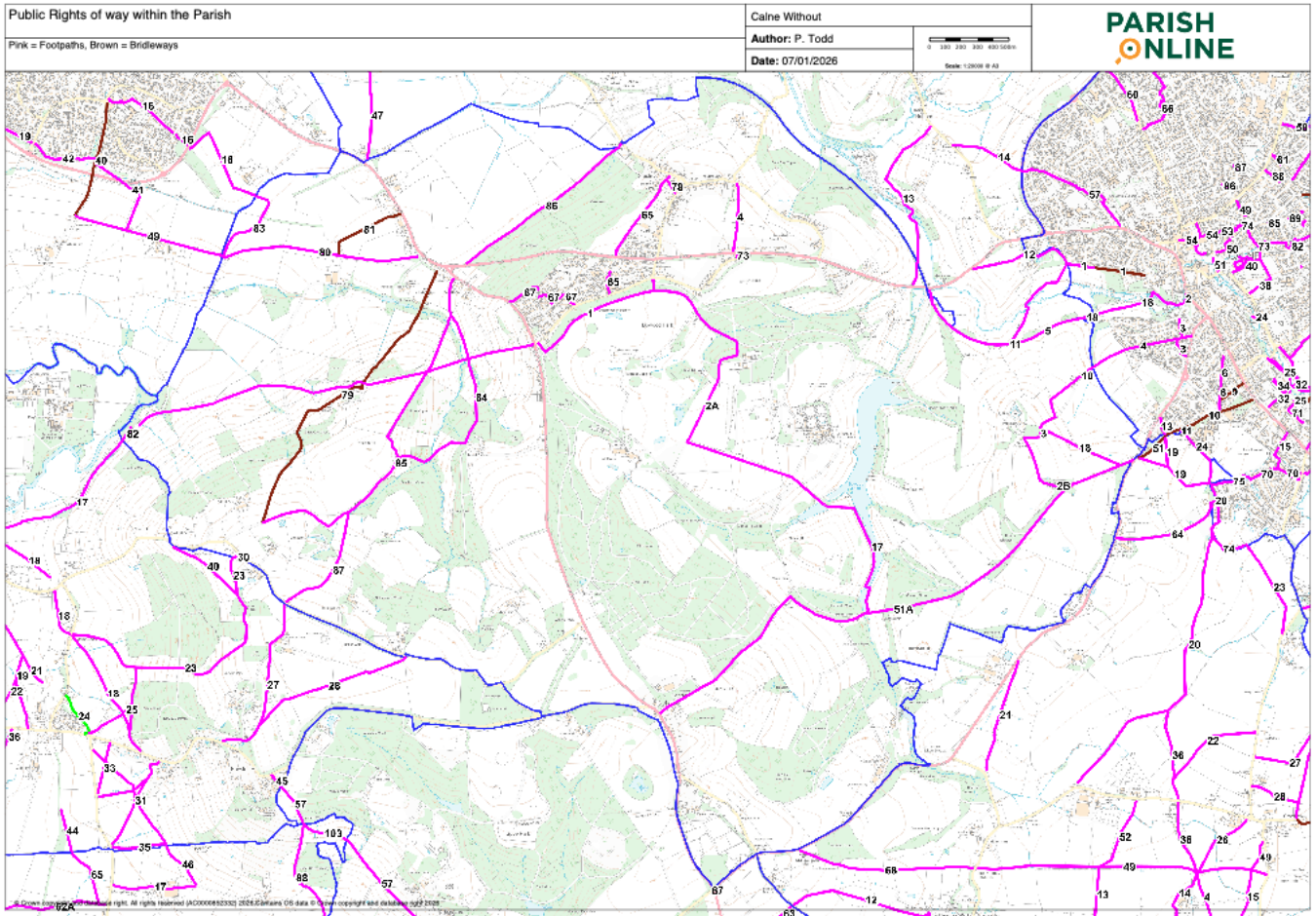
Aims & Objectives

- To engage with the community to promote walking, running, cycling and horse riding.
- To encourage participation in the improvement of opportunities for the enjoyment of the countryside, through the use of paths and rights of way, by all.
- To work with Wiltshire Council Countryside Access Officers to care for and promote the use of Rights of way within the Parish.
- To identify and record all the footpaths, cycleways and bridle paths within the Parish including permissive paths and those available through legal agreements with the owners as part of the Parish's green infrastructure.
- To promote the safe and responsible use of the paths as an important recreational asset and to work with landowners to identify opportunities for improvements to access.
- To promote improvements to the network.
- To improve the knowledge and appreciation of the Parish's landscape and historical assets.
- To request feedback from the public on the state of the existing paths, cycleways, and bridle paths, and any barriers to its use.
- To identify places of historical or landscape importance to the Parish.
- To promote the use of paths by residents and visitors and to identify projects to encourage the use of the asset.

Any maintenance work required will be undertaken after consultation with landowners and carried out under the supervision of Wiltshire Council Rights of Way. It is the intention to recruit local volunteers to help with this project as far as possible. Where local residents have knowledge of footpaths to include areas of historical importance and natural habitats of wildlife, flora and fauna, these will be incorporated into a local guide.

Members: May 2025 – May 2026:

Cllr John Barnes
Cllr Martin Handyside - Chair
Cllr Vaughan Mizon
Cllr Jean Spence



Public Rights of Way within the Parish. Pink lines = footpaths, Brown lines = Bridleways

- **Climate Emergency and Environment Working Group**

Aims & Objectives

- To engage with the community to raise awareness of the impact of climate change on our environment in Derry Hill and Studley Parish.
- To support Wiltshire Council initiatives to reduce emissions and to seek to make the county carbon neutral by 2030.
- To produce a carbon neutral strategy and associated policies for Derry Hill and Studley Parish Council
- To pursue a community led approach to the initiatives which engages, empowers, enables, and communicates with the entire Derry Hill and Studley Parish.
- To join and work alongside and in concert with Wiltshire local organisations in the delivery of policies and a Plan to support the achievement of carbon neutrality in Wiltshire by 2030.

Members: May 2025 – May 2026

- Cllr John Barnes
- Cllr Martin Handyside - Chair
- Cllr Bruce MacInnes

(d) Strategic Planning Working Group

Aims & Objectives

- To define the role, values and objectives of Derry Hill and Studley Parish Council.
- To identify and prioritise key projects and outcomes to inform the budget-setting process.
- To engage the wider community in identifying key initiatives.
- To develop a rolling Strategic Plan for Derry Hill and Studley Parish Council covering a four- year planning horizon, subject to annual review.
- Completion of a four-year Strategic Plan, with outcomes defined and broad strategies for achievement, for Derry Hill and Studley Parish Council that can be published to the Community, and which can inform the annual budget-setting process.

Members: May 2025 – May 2026:

Cllr John Barnes, - Chair
Cllr Claire Williams
Cllr Philippa Todd
Cllr Bruce MacInnes

4. Outside Bodies on which the Parish Council has representation or works with

Wiltshire Council Planning Department

The council is consulted on every planning application raised within the parish. All planning applications are reviewed at the Parish Council Meeting, where permitted by consultation deadlines; and by email where it's necessary to address them outside the meeting cycle. The Parish council is one of many consultees for each application and does not have the power to approve or reject. We do, however, have some influence and try to ensure that each planned development is appropriate from aesthetic, environmental and social points of view. The parish council meetings at which planning matters are discussed are open to the public who are encouraged to speak in relation to an application if they wish. The parish council refer to the Calne Community Neighbourhood plan, to which we are a signatory, when making decisions.

Calne Area Board

This board's focus is to bring some decision-making back to local areas. It is run by Wiltshire Council with the one Wiltshire Councillor who covers the Derry Hill and Studley Parish in attendance, along with councillors from Calne and surrounding parishes. Its purpose is to discuss issues of local significance and to receive updates from the Police, Fire service, and NHS. It has a budget to allocate grants to groups or organisations within the area. The full terms of reference, meeting agendas and minutes are available on the Wiltshire Council website. The chair of Derry Hill and Studley Parish Council represents the parish on this board with the specific objective of influencing, maintaining, and improving the services delivered by Wiltshire

Council to the parish. A secondary objective is to inform the parish councillors of activities occurring within the area which may impact our residents.

The Parish Council chair attends - Cllr John Barnes

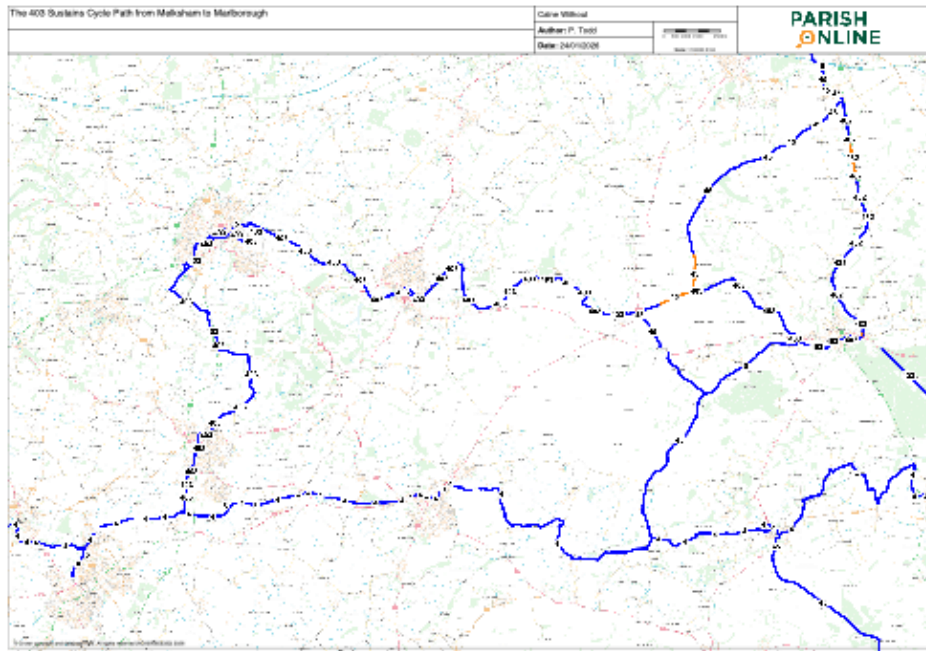
Local Highways & Footways Improvement Group (LHFIG)

This is a sub-group of the Calne Area Board specifically dealing with highways issues. It reviews highway improvement proposals submitted by Calne Town, local parish councils and other interested parties, allocating funding to those that it thinks warrant it.

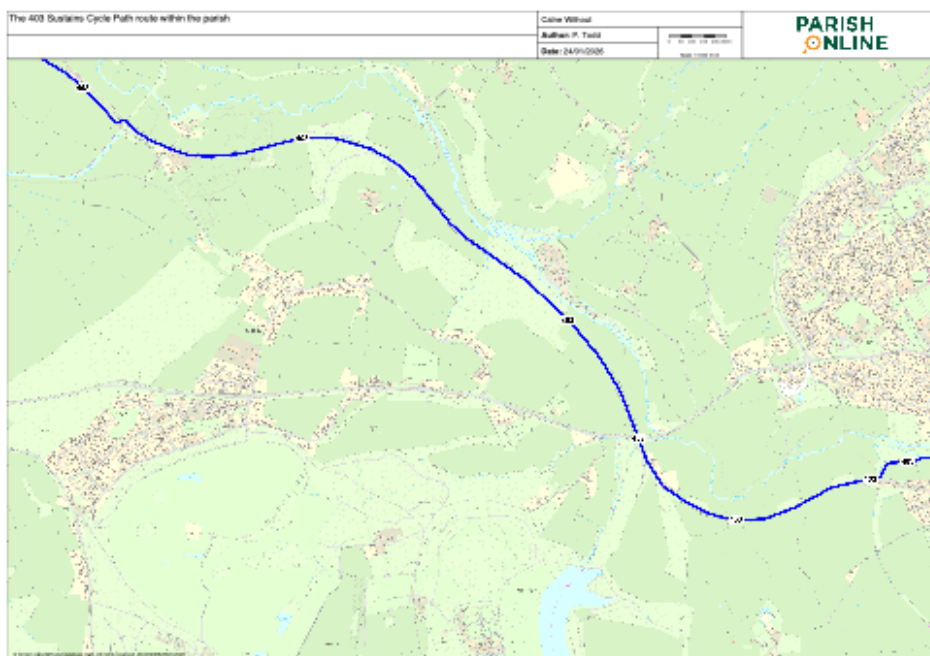
A member of the Highways, Transport and Road Safety Working Group attends.

National Cycle Route 403 Cross Council Working Group

The Parish Council has led the establishment of a Working Group with other town and parish councils along the National Cycle Route 403 between Chippenham, Calne and Avebury. The Group is working on improving and promoting the route. So far, the Group has made progress with additional signage, accessibility improvements and mud-scraping on the old railway line near Black Dog Halt. The diversion of a section onto a better alignment to the east of Yatesbury has been agreed with Sustrans and has been implemented. Further work to improve the surface and promote the route is being planned.



Sustrans Cycle Network route 403 – Linking Melksham to Marlborough (42 miles)



Section of route that runs along the parish border

Cllr John Barnes attends

Calne Area Parish Forum

The Calne Area Parish Forum is a collaborative body involving Calne Town Council and surrounding parish councils to discuss shared issues, particularly around planning (Neighbourhood Plan), infrastructure, and community projects, acting as a platform for local representatives and community input to inform Wiltshire Council strategies.

The parish council chair attends - Cllr John Barnes

Calne Community Neighbourhood Plan (CCNP)

Calne Community Neighbourhood Plan was adopted in 2025. The Neighbourhood plan covers the parish of Derry Hill and Studley. Neighbourhood planning gives communities direct power to develop a shared vision for where they live and shape the development and growth of their local area. For more information see <https://calnecommunityplan.com>.

Cllr John Barnes attends + one vacancy

Derry Hill and Studley Community Committee

The Community Committee was formed in 2022 in order to arrange events to celebrate the Platinum Jubilee of Queen Elizabeth II. Following those successful celebrations the Community Committee have continued to organise social events within the villages and now have responsibility for the annual Village Fete, Single Wicket competition, Remembrance Day Service at the War Memorial and Christmas lights switch on and a Christmas market. They run the Community Hub website – providing a diary of events and information on local groups. <https://derryhillandstudley.org>

The Parish Council supports the work of the Community Committee and provides regular funding to support insurance and website maintenance costs.

Cllr Philippa Todd, Cllr Claire Williams represent the Parish Council.

Wilts and Berks Canal Trust

Derry Hill and Studley Parish Council have entered into a Memorandum of Understanding with the Wilts and Berks Canal Trust, to support the Trust in the restoration of the canal along the northern edge of our parish, and particularly the Pewsham Waterside Regeneration Project. This ambitious project aims to regenerate the Pewsham Locks site, turning it into a community heritage resource for walking and cycling, education, boating, picnicking and more. Work has been progressing well, with the Carpenters' Workshop rebuilt, the dry dock restored and work is underway on restoring the three locks.

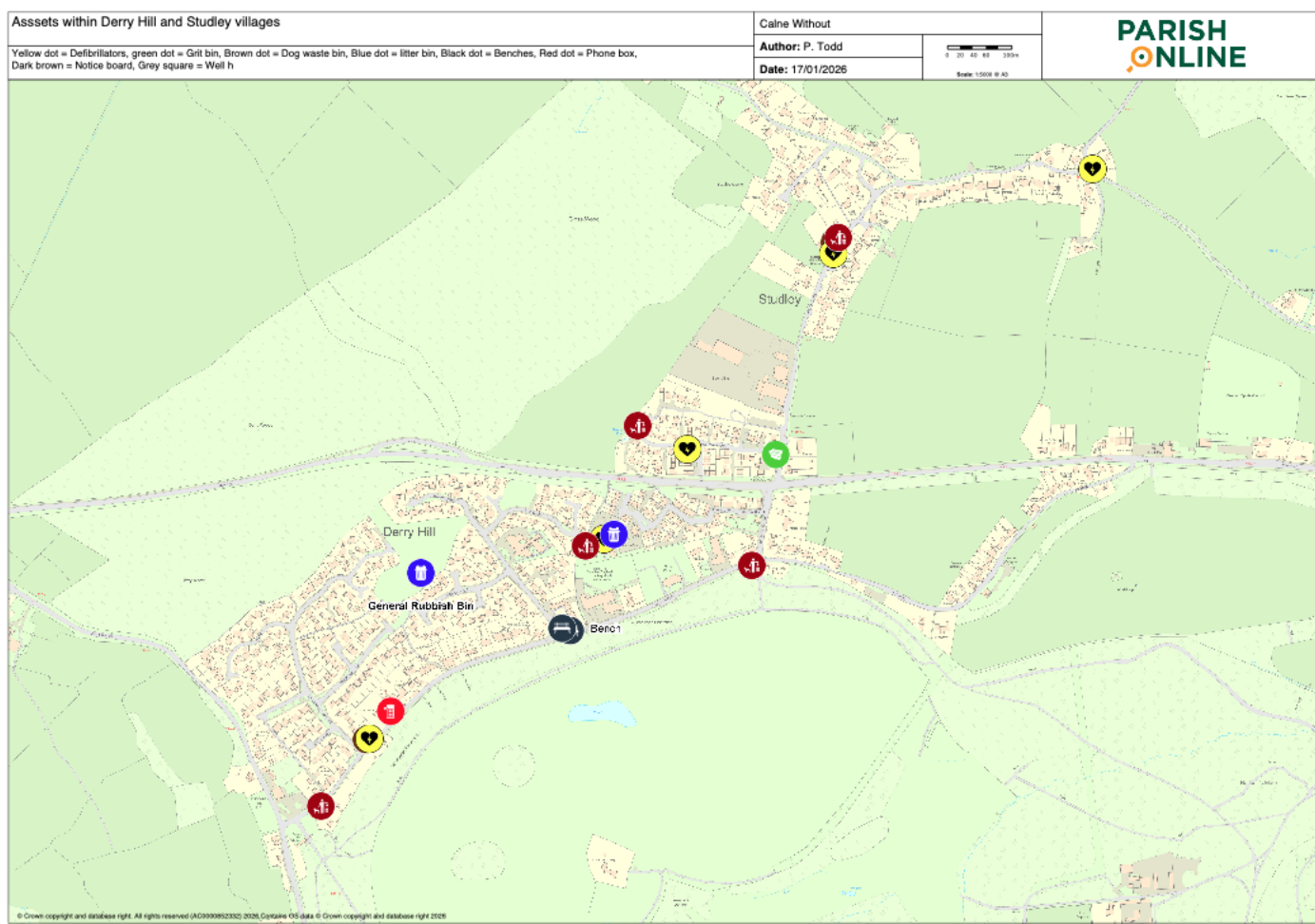
Cllr Martin Handyside represents the council.

Best Kept Village Competition

In conjunction with the Community Committee part of the parish entered the Best Kept Village Competition in 2025 (We came second in our division). Plans are to repeat again in 2026

Cllr Martin Handyside and Cllr Philippa Todd represent the council.

5. Assets held by the Derry Hill and Studley Parish Council



The position of the assets within Derry Hill and Studley Defibrillators (yellow Dot) Phone box (red dot), Grit bin (green dot) Benches (black dot), Litter bins (blue dot), and Dog waste bins (maroon dot). Note the Derry Hill Notice Board (dark brown dot) is hidden behind the defibrillator dot by the phone box, and the Studley Notice Board is hidden behind the Defibrillator and Dog waste bin dots in Studley

Pewsham Ward:

Asset	Location
The Well House	A342 Old Derry Hill. What3Words Location: originate.serves.treat
Defibrillator	On the side of the Pewsham Public House. What3Words Location: afraid.starring.personal.

Derry Hill and Studley Ward:

Asset	Location
Studley Noticeboard	Studley Lane, Studley. What3Words Location: dilute.example.abandons
Petty's Acre Goal Posts	Petty's Acre. What3Words Location: incurs.losses.ourselves
Derry Hill Notice board	Church Road by phone box. What3Words Location: prouder.leaflets.selects
Derry Hill Phone Kiosk – accommodates Defibrillator	Church Road, Derry Hill. What3Words Location: prouder.leaflets.selects
Bench	Tile Court, facing Church Road. What3Words Location: diverts.erupts.failed
Bench	Tile Court, facing Lansdowne Crescent East. What3Words Location: slouched.singing.vanilla
Commemorative Stone	Lansdowne Hall, Derry Hill. What3Words Location: suitable.tickling.adapt
Play equipment	Petty Acre, Derry Hill. What3Words Location: universe.powder.opened
Picnic Bench	Petty's Acre, Derry Hill. What3Words Location: universe.powder.opened
Studley Grit bin	Studley Lane at entrance to Studley. What3Words Location: pounces.asked.nearly
Studley Lane Dog Waste Bin	Studley Lane. What3Words Location: dilute.example.abandons
Studley Gardens Dog Waste Bin	Studley Gardens. What3Words Location: pursue.driveway.depths
Dog Waste bin	Church Road by Eastern entrance to the Bowood Estate What3Words Location: explained.factories.outlines
Dog Waste bin	Church Road, opposite the Lansdowne Arms Public House. What3Words Location: thickens.pelt.rescue
Dog Waste bin	Petty Lane, by the Lansdowne Hall. What3Words Location: conductor.imprints.furniture
General Waste bin	Lansdowne Hall, Derry Hill. What3Words Location: overruns.deed.throat
General Waste Bin	Petty's Acre, Derry Hill. What3Words Location: TBC

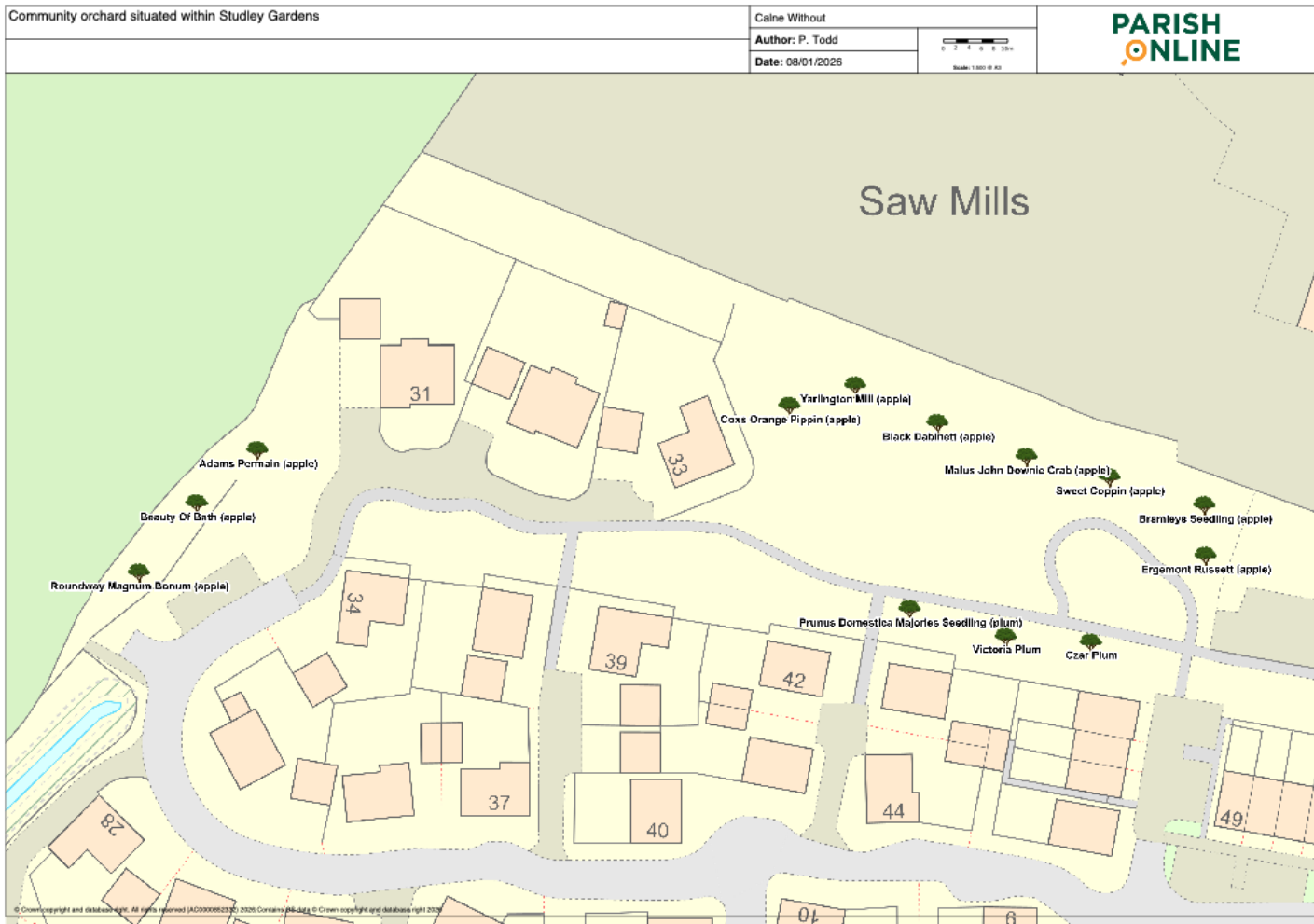
Bowood and Sandy Lane Ward:

Asset	Location
Sandy Lane Notice Board	The George Inn Car Park. What3Words Location: twitching.live.tasks

Combined bicycle parks and planters are situated around the parish:
 Lansdowne Arms x 2
 The Pewsham x 2
 Studley Gardens Play Area x 2
 The Lansdowne Hall x 2

Studley Gardens Community Orchard

Various fruiting trees were planted in Studley Gardens in 2024 which, as they mature, will become a community asset with appropriate events being planned by the Community Committee.

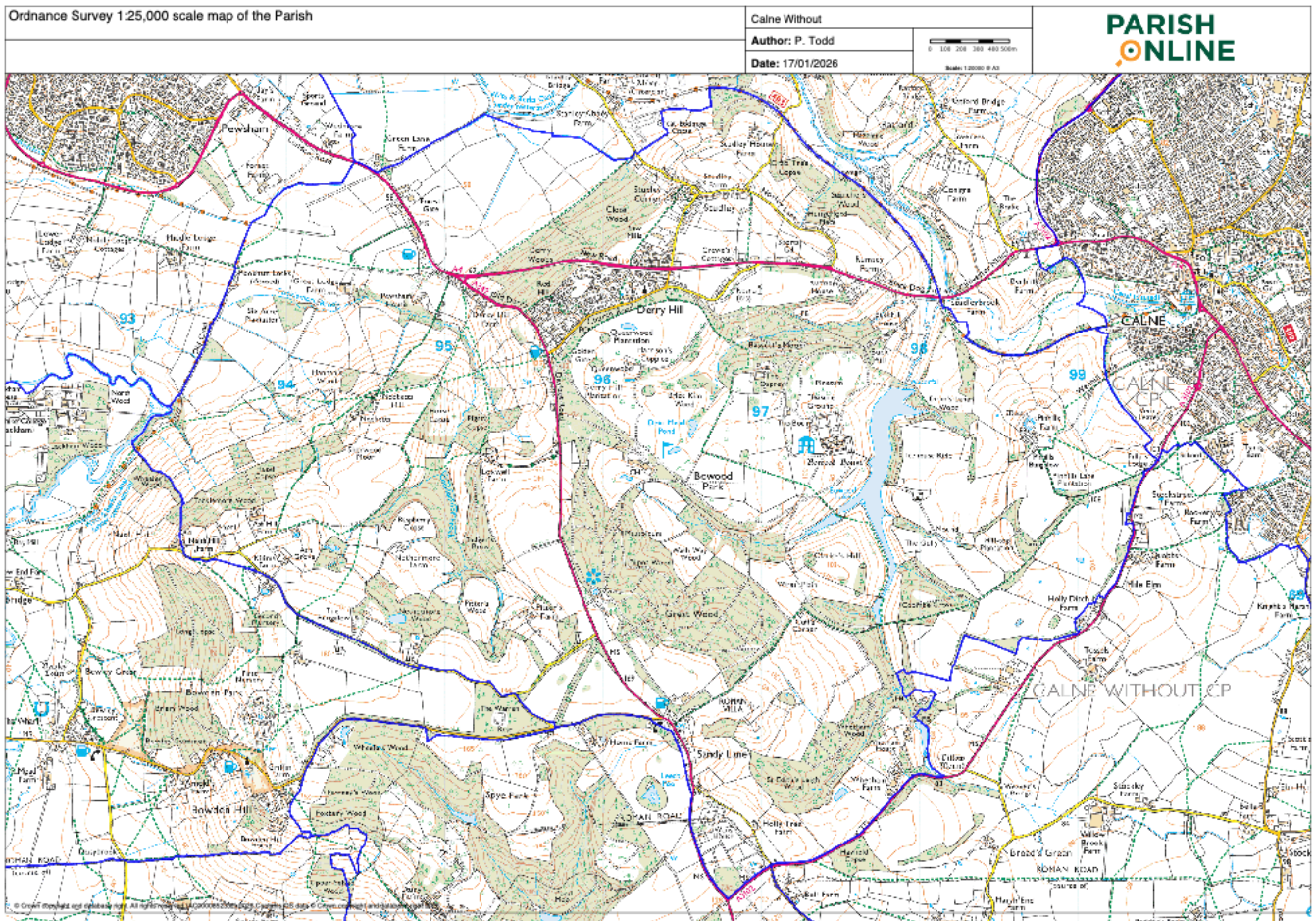


The Community orchard trees planted within the Studley Gardens development 2025

Appendix The civil parish of Derry Hill and Studley

Civil parishes are the first tier of local government in England, focused on administrative duties like amenities and planning, whereas ecclesiastical parishes are territorial units of the Church of England centred on a church and managed by a parochial church council. Though they often share similar boundaries due to history, they are legally distinct entities with different functions. Derry Hill and Studley is part of the Marden Vale ecclesiastical parish, Sandy Lane is part of the Bromham, Chittoe and Sandy Lane ecclesiastical parish.

The parish has an area of 1889.9615 hectares or 7.2972 square miles. The perimeter is 21,095.52 km or 13.1081 miles



Ordnance Survey 1:25,000 scale map of the Civil Parish of Derry Hill and Studley, the blue line denoted the boundary

Parish Information

- Health provision** is supplied by NHS Bath & North East Somerset, Swindon and Wiltshire Care Board.
- Fire service provision** – Dorset and Wiltshire Fire and Rescue
- Policing** – Wiltshire Police
- Ambulance** – South Western Area
- Unitary authority** – Wiltshire County Council
- Ceremonial County** – Wiltshire
- Region** – South West
- UK Parliament Constituency** – Chippenham (Sarah Gibson – Liberal Democrat)

Post town – Calne

Post code district – Derry Hill and Studley – SN11; Sandy Lane, Naish Hill and Pewsham - SN15

Dialling Code – 01249

Utility provision

Water and sewerage: Wessex Water is the regional provider

Gas: Wales and West Utilities operate in this area and cover gas main replacements and repairs

Electricity: Electricity provision is covered by SSEN

Broadband and telephone: various providers are available

Village communications

Inspire Magazine – edited and published by the Parish Council. Ten editions a year are distributed to all households within the parish.

Derry Hill and Studley Parish Council website – <https://derryhillandstudley-pc.gov.uk>

Derry Hill and Studley Parish Council Facebook presence

The Derry Hill and Community Hub – information about the village and a diary of events – run by the Community Committee – <https://derryhillandstudley.org>

The Derry Hill and Studley Community forum (Facebook)

Derry Hill, Old Derry Hill and Studley History (Facebook)

For Sale in Derry Hill and Studley (Facebook)

Parish Facilities

Education facilities within the parish

Derry Hill C o E (VA) Primary School, Headteacher Mrs Hayley Roberts

www.derryhillschool.co.uk

Rub a Dub – Pre-school based at the Lansdowne Hall – five days a week during school term time.

Shopping facilities within the parish

Village shop and Post Office - Londis – Church Road, Derry Hill

Evie's Book Swop Stop – Lansdowne Crescent East, by the entrance to Kingston House Care Home

Village Halls within the parish

Lansdowne Hall – Petty Lane, Derry Hill

Methodist Church and Studley Hall, Studley

Public Houses, Hotels and restaurants within the parish

Bowood Hotel, Spa and Golf resort

Lansdowne Arms, Derry Hill – Public house and restaurant

The Pewsham, Pewsham - Public house and restaurant

Gurka Baynjan, Studley (The Black Dog) - Public house and Nepalese restaurant

The George, Sandy Lane – Public house and restaurant

Sporting and Exercise facilities within the parish

Bowood Golf Club

Bowood Spa

Bowood Sports Centre – situated on the A4 – Football

Lansdowne Hall Tennis Court – Hot Shots Walking Netball, Tennis and Basketball

Lansdowne Hall - Badminton, Hot Shots Walking Netball and play equipment within the garden area

Dancefit, Pilates, Yoga and Circuit training sessions all operate at the Lansdowne Hall

Two Walking groups are based in the villages
Martial Arts classes – Derry Hill School
Goal posts are situated on Petty Acre, Derry Hill
Play equipment suitable for young children is situated on Petty Acre and within the Studley Garden development.

Religious groups operating within the parish

Christ Church, Church of England, Church Road, Derry Hill
St Martin & St Nicholas, Church of England, Sandy Lane
Methodist Church and Studley Hall, Studley
Baptist Church – Little Zoar Strict Baptist chapel, Studley Lane, Studley
Dayspring - Lansdowne Hall, Derry Hill
Bluebell Spiritual Church - Lansdowne Hall, Derry Hill
Mother's Union Prayer and Fellowship Group – Christ Church, Derry Hill

Youth groups operating within the parish

Scouts, Cubs and Beavers – Scout Hut, Old Road
Girl Guides and Brownies – Lansdowne Hall
Youth Club – Lansdowne Hall
Derry Tots – under 5's playgroup – Lansdowne Hall

Various social groups operate within the Parish

Women's Institute – Lansdowne Hall
Theatre Group – Lansdowne Hall
Sparkly Singers - Lansdowne Hall
Gardening Club - Christ Church, Derry Hill
Two book clubs
Lunch Club – Bowood Brasserie
Weekly Coffee mornings are held at Christ Church, Derry Hill and the Methodist Church and Studley Hall, Studley

Various craft groups operate within the parish

Derry Hill Art Club – Via Zoom
Bowood carving and woodworking club – Outbuilding behind the Lansdowne Arms
Seasons Art Classes – Lansdowne Arms
“Crafternoon”, a stitching, knitting and craft group based in Christ Church, Derry Hill

Annual Events organised by the village “Community Committee”

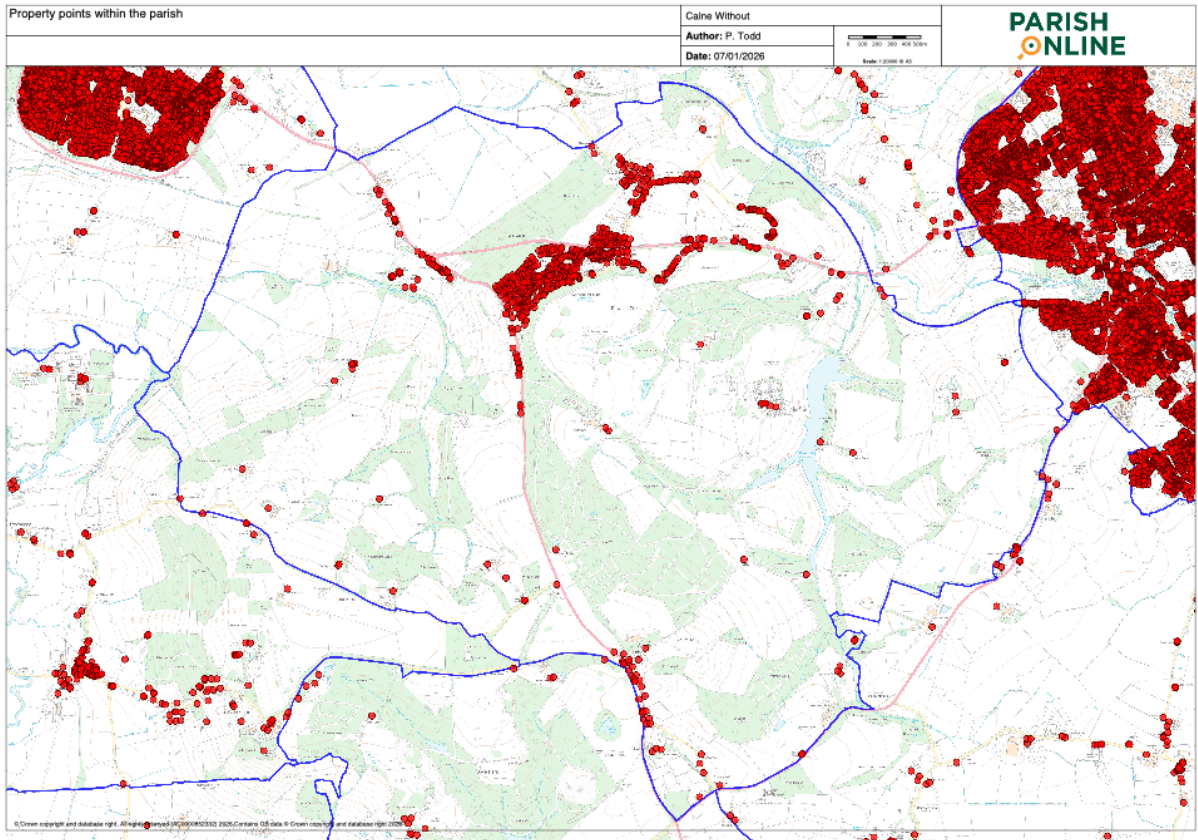
Village Fete – Second Saturday in July
Single Wicket competition
Christmas lights switch on and Christmas market
The Remembrance Day service at the War Memorial
Other events are arranged by the Community Committee as and when.

Derry Hill and Studley Parish Council

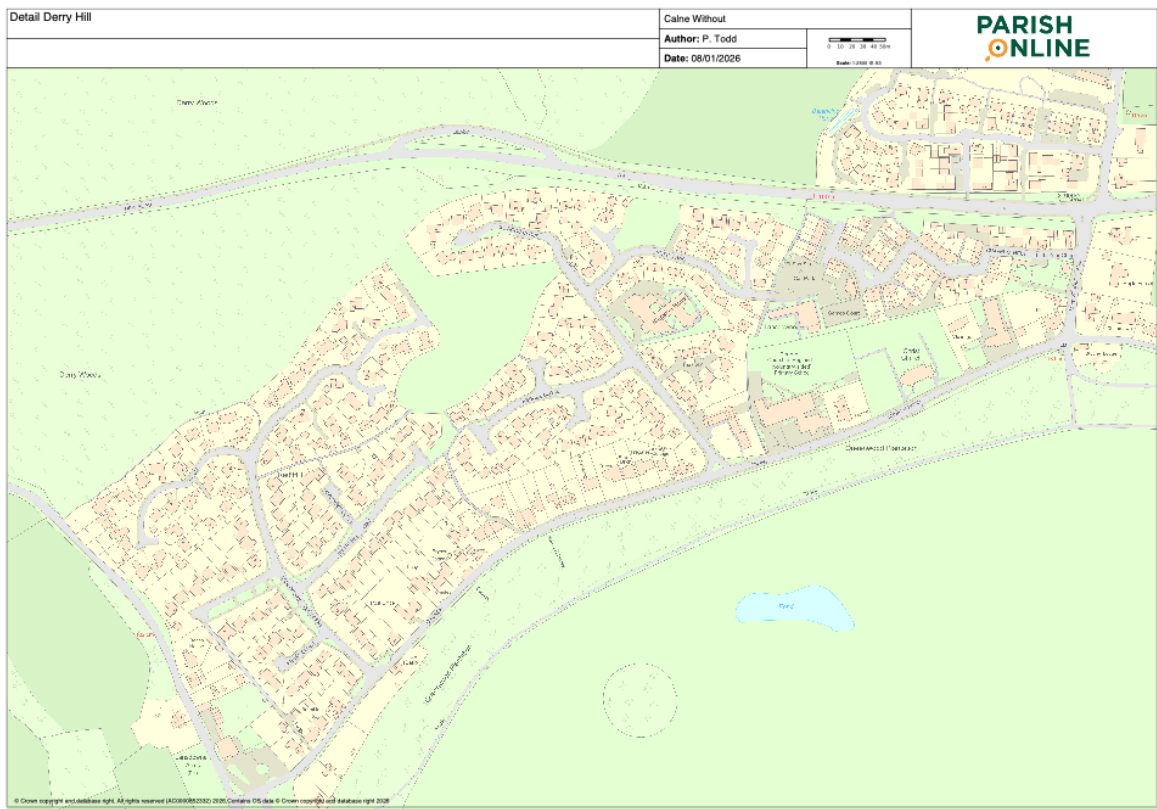
10 monthly meetings (not January or August), second Monday of the month, held in the Lansdowne Hall

Major Employers within the Parish

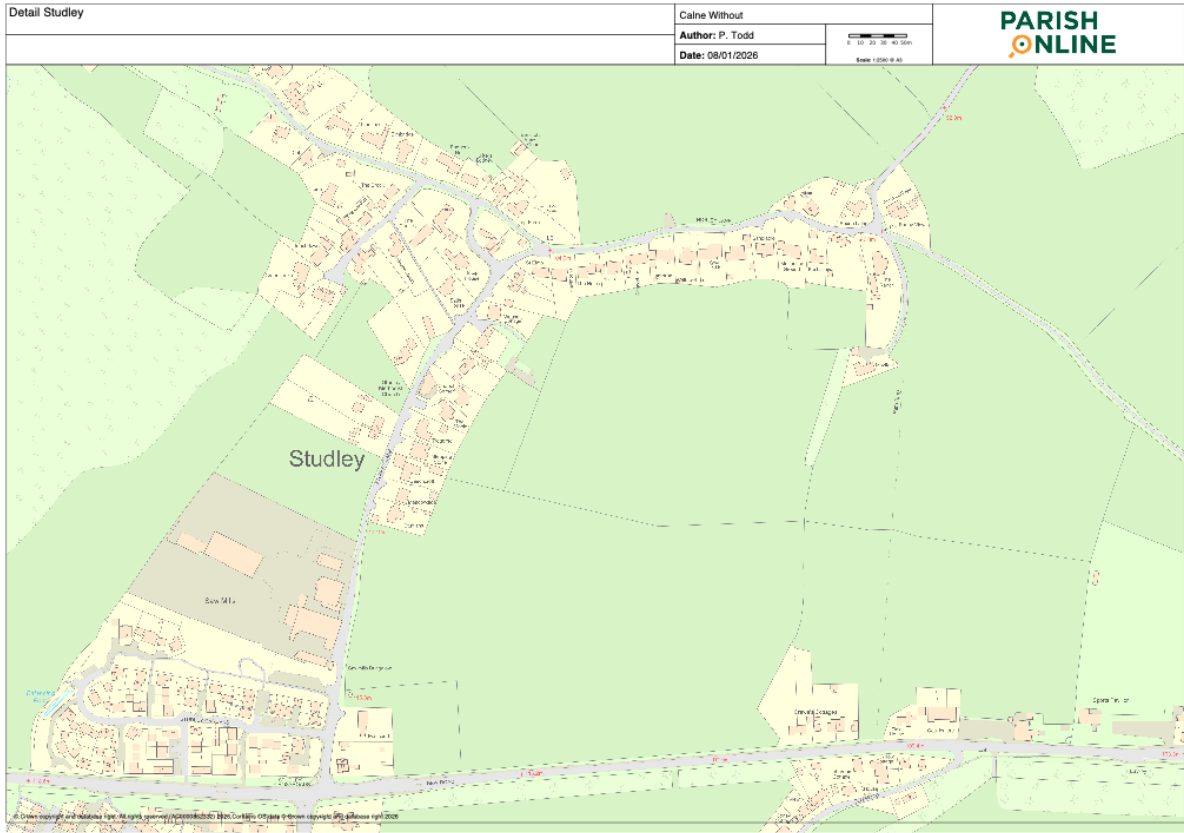
The Bowood Estate including the Bowood Hotel, Spa and Golf resort
Vastern Timber, Studley
Derry Hill School, Derry Hill
Kingston House Care Home, Derry Hill



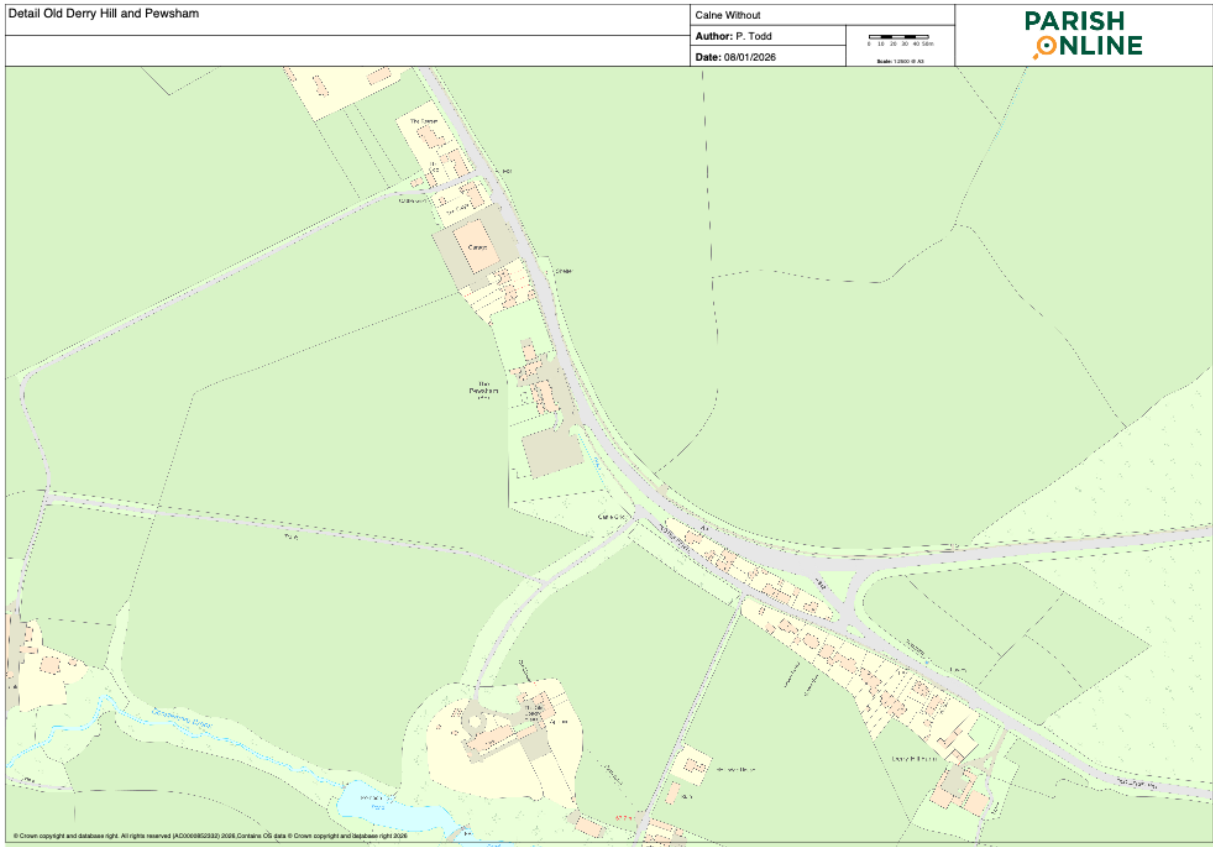
Property points within the parish (Red dots)



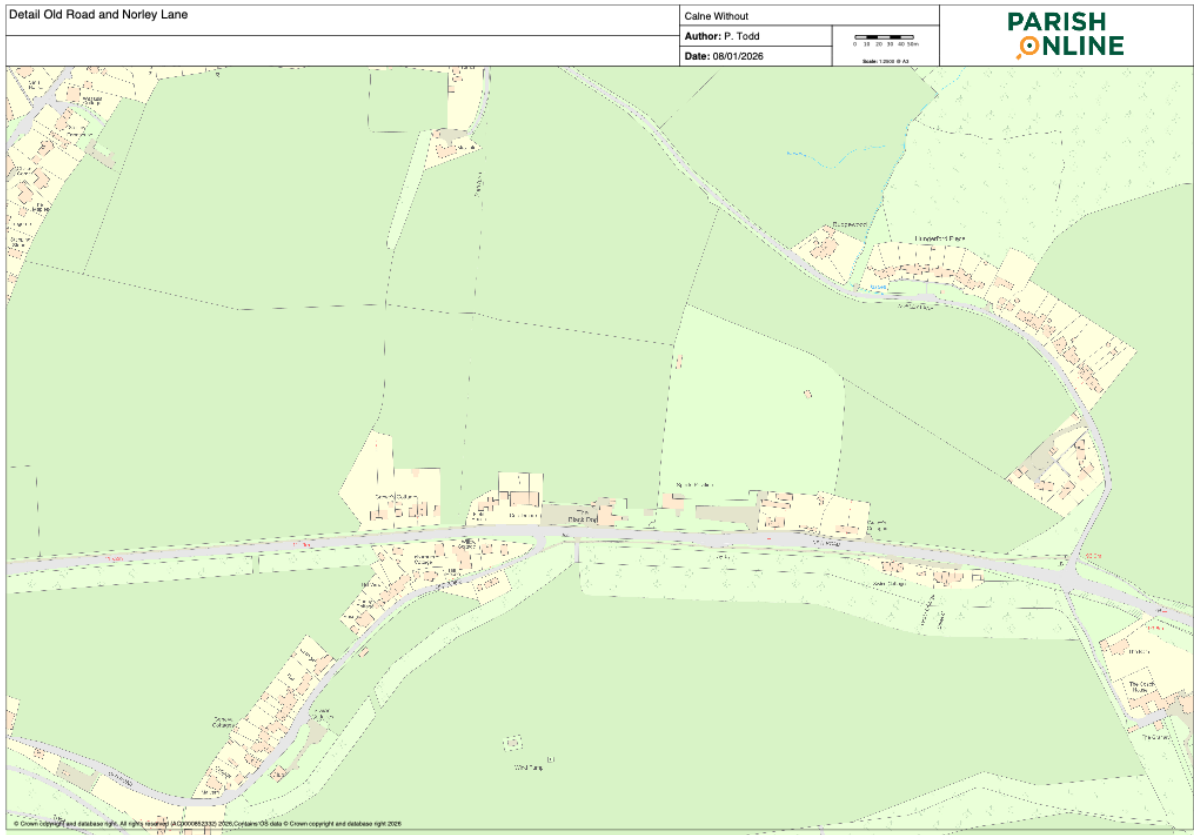
Detail Derry Hill



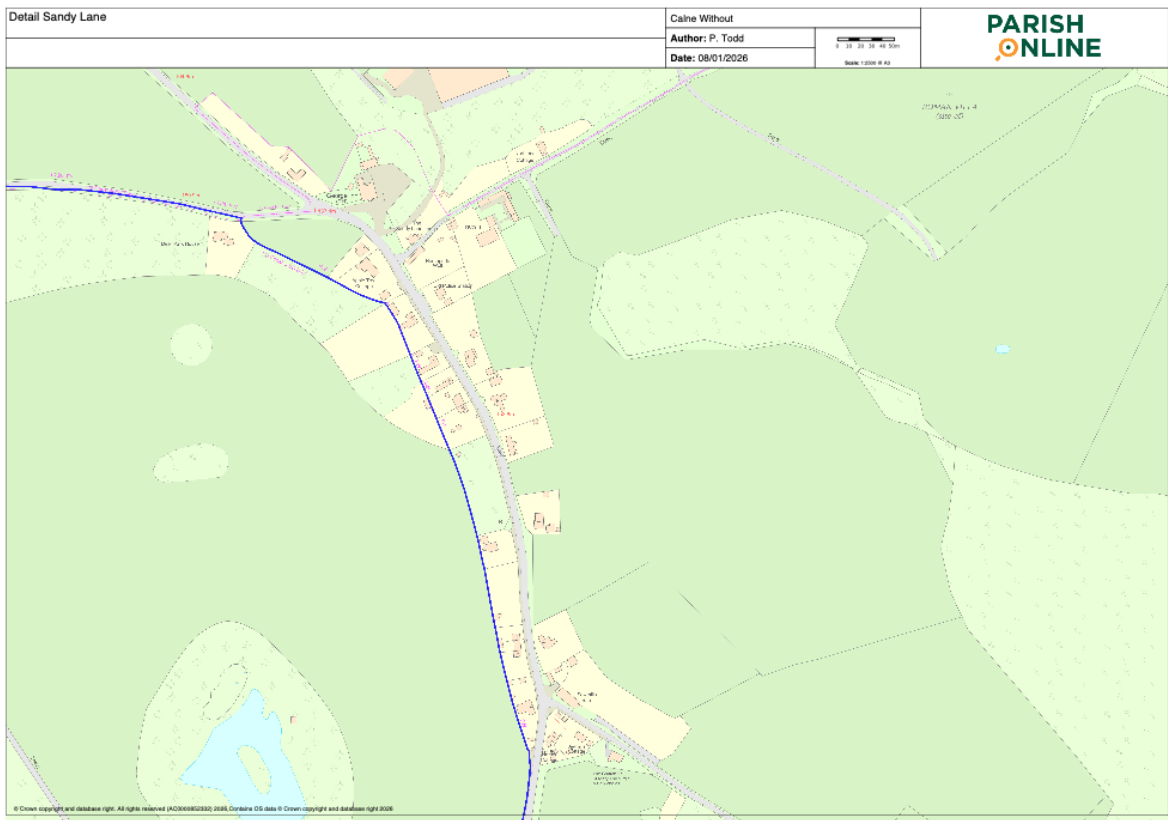
Detail Studley



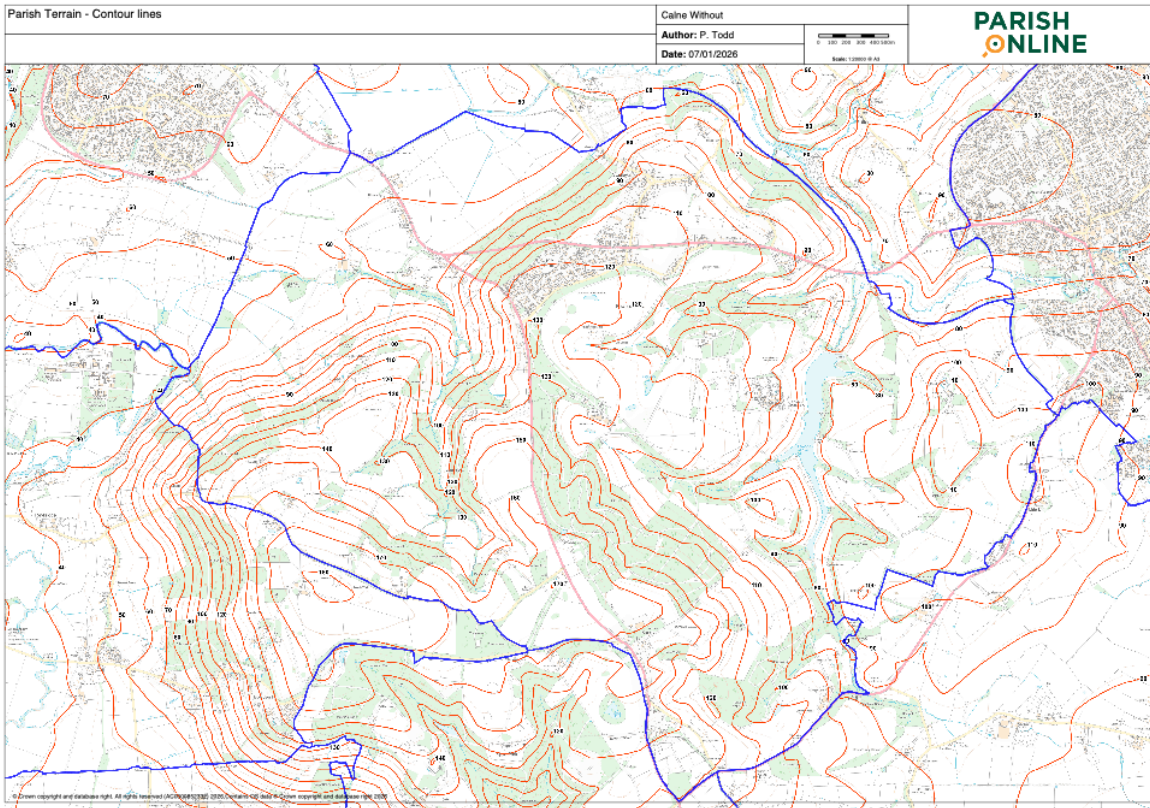
Detail Old Derry Hill and Pewsham



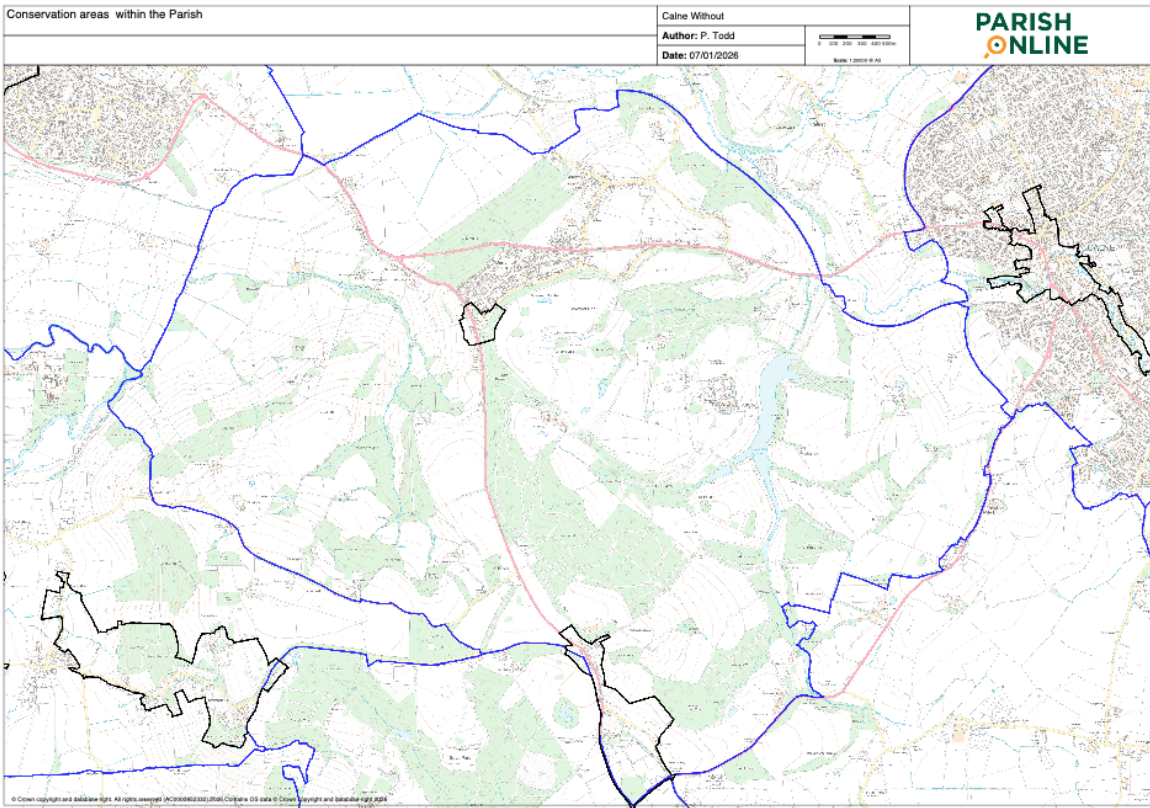
Detail Old Road and Norley Lane



Detail Sandy lane

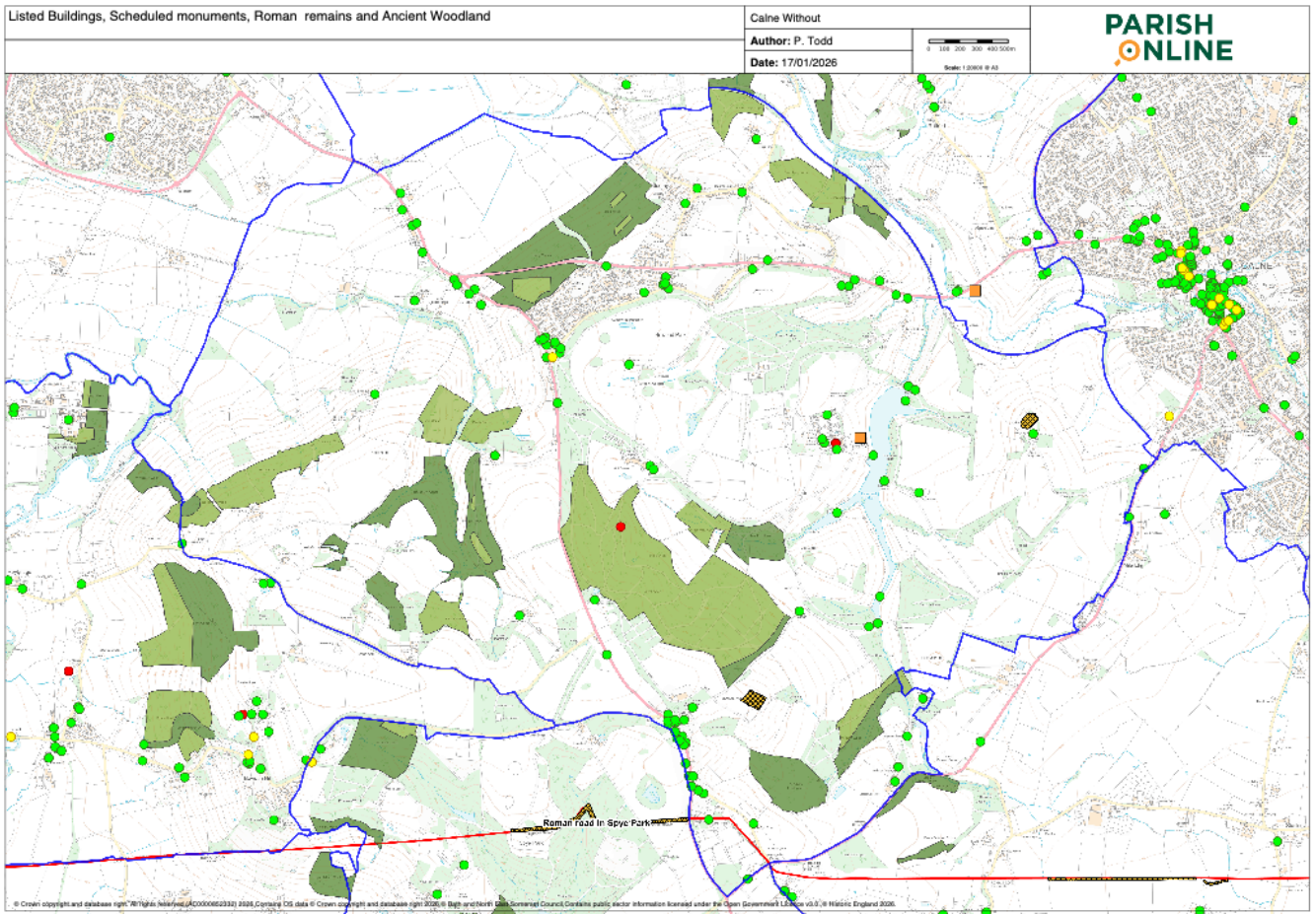


The parish terrain (Contour lines)



There are two conservation areas within the parish, outlined in black

There are numerous listed buildings, two scheduled ancient monuments and evidence of Roman remains within the parish as well as areas of ancient woodland – see below for the map showing their locations. The Bowood Estate is a Registered Park and Garden.

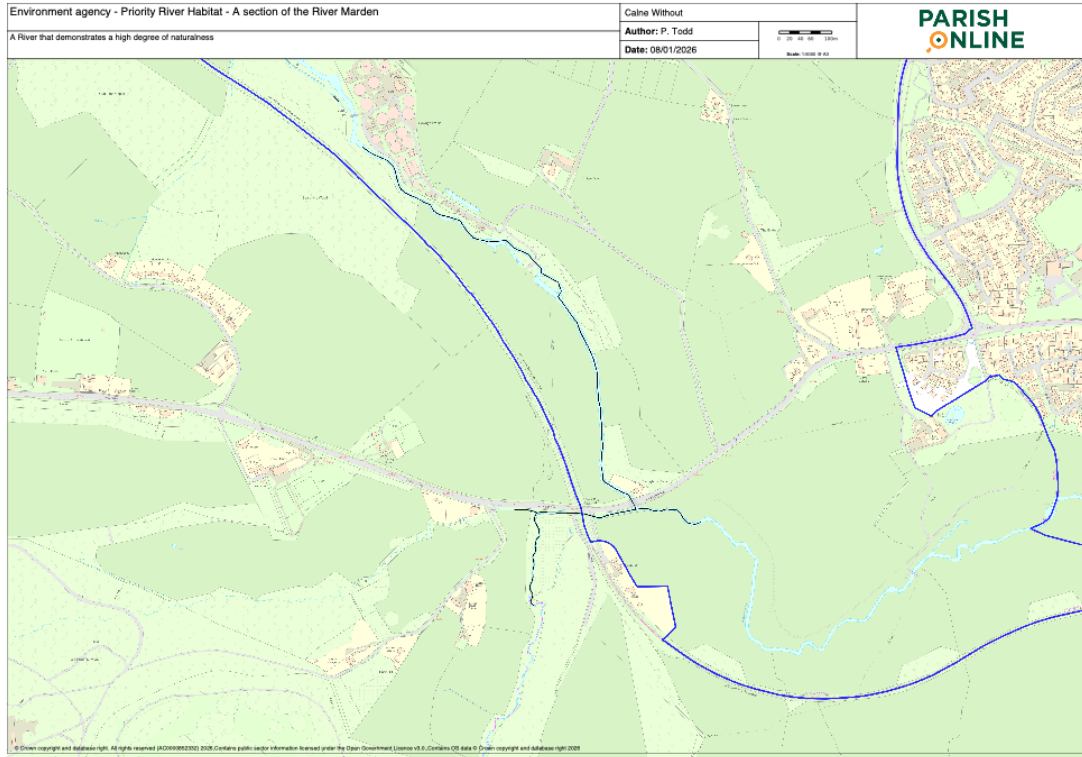


Listed buildings within the parish. Red dot = Grade I, Green dot = Grade II, Yellow dot = Grade II*
 Yellow hatching = Ancient monument – Nuthills Roman Villa near Sandy Lane and moated site and fishponds north west of Pinhills Farm.

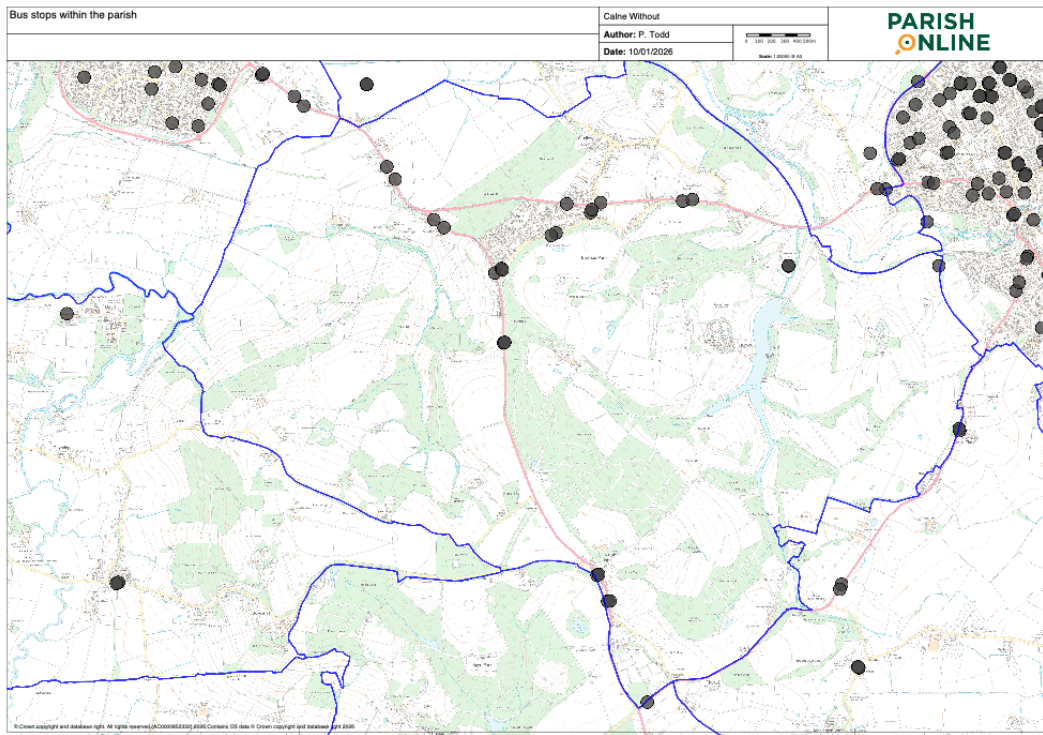
Other Roman remains are Orange Square = Roman building – use unknown, Red line = Roman Road from Aqua Sulis (Bath) to Cunetio (Mildenhall 1.5 miles east of Marlborough)

Areas of ancient woodland within the parish. Dark green = Ancient and semi natural woodland, Light green = Ancient replanted woodland.

The Environment Agency classifies a section of the River Marden that passes through the parish as a "Priority River Habitat". A "Priority River Habitat" refers to rivers and streams identified as the most natural and ecologically valuable remaining in England, crucial for biodiversity, with conservation efforts focused on protecting and restoring these key freshwater systems, assessed by their physical, hydrological, chemical, and biological integrity. It's a designation under the UK Biodiversity Action plan, aiming to safeguard these vital habitats from significant modification.



Environment Agency – Priority River habitat – A section of the River Marden - lighter blue line
(Darker blue line is the parish boundary)



Bus stops within the parish (black dots)

The services are:

Faresaver (33/X33): This is a primary route connecting Chippenham, Derry Hill, Studley, and onwards towards Devizes, stopping at key points like Derry Hill School, Golden gates entrance and Studley Crossroads. The X33 is the only bus service serving Sandy Lane.

Stagecoach West (55): Operates between Chippenham, Calne, and Swindon, stopping on the A4

School Services Faresaver (X10): School-specific routes, travelling from Cherhill to Chippenham Schools, stopping near Studley on the A4

Derry Hill and Studley Census data 2021

Whilst the data may be considered somewhat out of date, the numerical variance is minimal for statistical purposes and the information is still relevant for planning purposes.

This data applies to Derry Hill and Studley; which, for the purpose of the Census, are combined. The information is not available for Sandy Lane.

Population and make-up of households

Derry Hill and Studley has a population of 1832, of which 933 are female and 899 are male. There are 66 children under 5 (4%) and 288 students (16%). There are 734 households, of which 18.3% are people living on their own, 43.6% two person households, 19.2% three person households, 13.9% four person households, 3.8% five person households, 1.1% six person households, 0.0% seven person households and 0.1% eight person households. There are no zero occupancy houses.

Age groups

0 - 9 years = 9%, 10 – 19 = 10%, 20 – 29 = 9%, 30 – 39 = 10%, 40 – 49 = 12%, 50 – 59 = 18%, 60 – 69 = 14%, 70 – 79 = 11%, 80 – 89 = 5%, 90 – 99 = 2%

The median age is 40 to 44

Health

52.5% of the population report being very good health, 33.4% are in good health, 10.9% are in fair health; compared with 3.2% who are in bad or very bad health. 5% of the population are registered as disabled with their day-to-day activities limited a lot, 9% of the population are registered as disabled with their day-to-day activities limited a little. 9.9% declare a physical or mental health condition but their day-to-day activities are not limited.

1 disabled person lives in 20.8% of households with 2 or more disabled persons living in 4.4% of households. 5.7% of all adults provide some level of unpaid care every week, with 2.1% providing in excess of 34 hours a week of unpaid care.

Deprivation

29% of the households are classified as deprived in at least 1 dimension (education, employment, health or housing), with 7% in two dimensions and 1.0 % deprived in 3. 8.9% of households (2022 data) have fuel poverty.

The four household deprivation dimensions as defined by the Office of National Statistics are:

1. Education – A household is classified as deprived in the education dimension if no one has at least level 2 education (4 GCSE passes or more) and no one aged 16 – 18 years is a full-time student.
2. Employment – A household is classified as deprived in the employment dimension if any member, not a full-time student, is either unemployed or economically inactive due to long term sickness or disability.
3. Health – A household is classified as deprived in the health dimension if any person in the household has general health that is bad or very bad or is identified as disabled.
4. Housing - A household is classified as deprived in the housing dimension if the household's accommodation is either overcrowded, in a shared dwelling, or has no central heating.

Employment

Of the 49% of the residents of Derry Hill and Studley who are in work: 21% are Managers, Directors and senior officials, 23% are in professional occupations, 16% are in associate professional and technical occupations, 8% are in administrative and secretarial occupations, 8% in skilled trade occupations, 7% in caring, leisure and other service occupations, 5% in sales and customer service occupations, 4% in process, plant and machine operatives and 7% are in elementary occupations.

The main industries that people in the parish work in are: Construction of buildings; civil engineering; specialised construction activities (9%), Education (9%), Public administration and defence; compulsory social security (8%), Retail trade, except of motor vehicles and motorcycles (7%), Human health activities (6%), Computer programming, consultancy and related activities (5%), Crop and animal production, hunting and related service activities (4%), Social work activities (3%), Food and beverage service activities (3%), Wholesale trade, except of motor vehicles and motorcycles (3%).

The number of hours worked per week: Part time - 15 hours or less = 13%, Part time -16 to 30 hours = 19%, Full time - 31 to 48 hours = 54% and Full time - 48 hours or more = 14%

Transport

People travel to work by various means, 48.4% travel by driving a car or van, 42.6% work mainly at or from home. 50.4% use a sustainable (work from home, public transport, cycle, walk or passenger in a car or van) travel to work method. (Note – the Census was taken when Covid-19 restrictions were in place and as a consequence more people were working from home than normal.)

In addition to the people who work from home, 10% work in the local area (<5km), 18% travel between 5km and 20km, with 7% travelling between 20km and 40km to work. 14% have no fixed place of work or work outside the UK.

Travel to work or education: 46% work mainly at or from home, 44% drive a car or van, 3% are a passenger in a car or van, 3% travel on foot, 1% travel by bus and 1% use another method.

Vehicle ownership: 6% of households have no cars or vans, 29% have 1 car or van, and 41% have 2 cars or vans and 24% have 3 or more cars and vans in the household.

Education

Of those over 16 years of age 40% have a degree, or higher, equivalent qualifications, 18% have the equivalent of 2 or more A levels, 4.0% have completed apprenticeships, 15% have 5 or more good GCSEs (or equivalent), 8.0% have between 1 and 4 GCSE's (or equivalent), and 12% have no qualifications. 3% have other work related or vocational qualifications.

Housing

60% of the housing in the area is detached, 29% semi-detached, and 8% terraced, 1% live in a purpose-built block of flats and 1% in a converted or shared house. 4% of the properties have one bedroom, 14% have two, 32% have three, and 49% have four or more bedrooms. 41% of the properties are owned outright, 33% are owned with a mortgage, 1% shared ownership, 7% are socially rented, and 16% are rented from a landlord or letting agency and 2% are privately rented. The 2021 census data records 20 homes per 1000 dwellings are classed as holiday homes.

Central heating

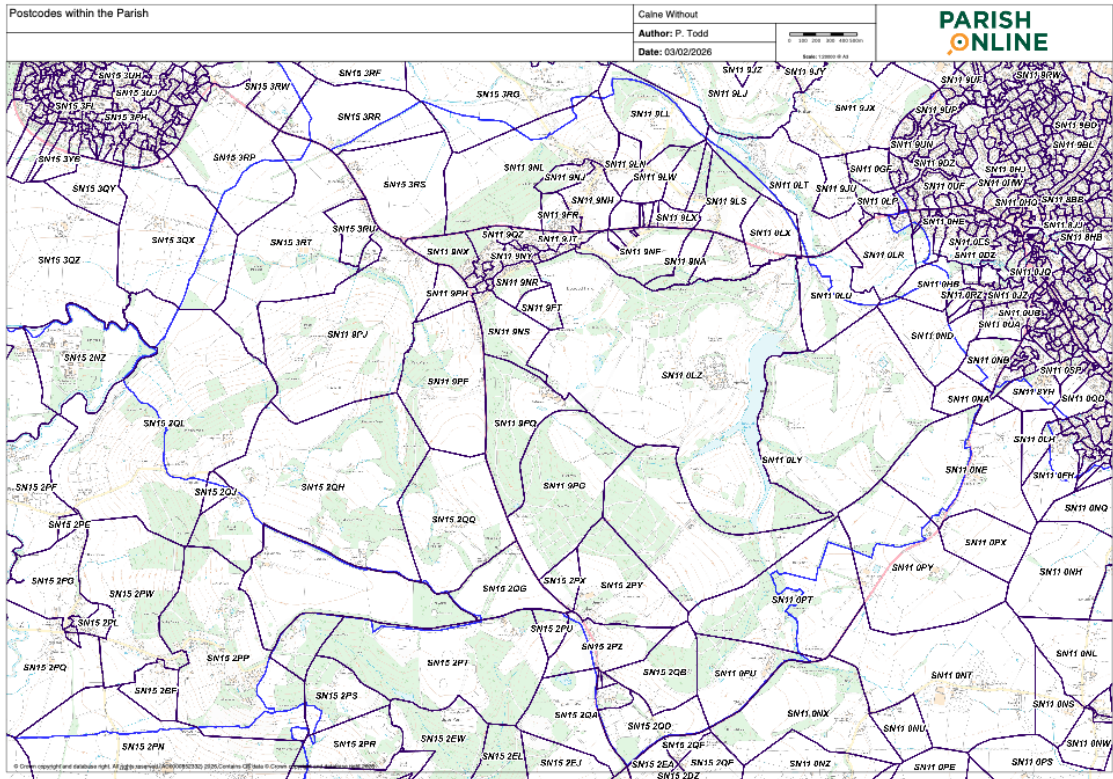
60% of properties have mains gas only, 1% have tank or bottled gas, 20% use oil only, 3% use electric only with 13% using two or more types of central heating, not including renewable energy. 1% use renewable energy only for central heating, with 1% using renewable with some other form of energy.

According to the Office of National Statistics 8.9% of the households in the civil parish are considered to have fuel poverty (2022 data).

The geology around the parish of Derry Hill & Studley

Derry Hill and Studley sits on a mix of Jurassic limestones and sands, with clays and younger deposits nearby, all resting on older formations, contrasting with the chalk uplands just to the southeast.

Postcodes within the parish



Detail - Derry Hill and Studley

