

UPDATE FROM HIGHWAYS, TRANSPORT AND ROAD SAFETY WORKING GROUP

1. INTRODUCTION

The purpose of this paper is to update Council on the work of the Highways, Transport and Road Safety Working Group, including current schemes, current issues, ongoing projects and priorities for 2025/26.

2. SCHEME UPDATE

2.1 Completed Schemes

Scheme	Background Links	Status	Any Actions
Sandy Lane Gates & Signage	https://calnewwithout-pc.gov.uk/wp-content/uploads/2023/02/Highways-improvement-form-Site-7-Sandy-Lane.pdf	Complete – Highways to issue invoice for Parish Contribution of £1,031.39. (£1,350 in reserves).	<i>Awaiting invoice</i>
Old Derry Hill extension to barrier	https://calnewwithout-pc.gov.uk/wp-content/uploads/2023/02/Highways-improvement-form-Site-16a-Old-Derry-Hill.pdf	Completed Oct'24. Awaiting invoicing.	<i>Awaiting invoice</i>
A4 Studley Crossroads Speed Limit Reduction	https://calnewwithout-pc.gov.uk/wp-content/uploads/2023/09/Ap-pendix-5.pdf	Changes came into effect on 14Oct24. Parish contribution of £3,821.31 paid 18Mar25. Speed survey requested by Parish in Feb25. Depending on the results, this may enable follow up work, such as establishing a Community Speedwatch, deploying speed indicator devices or requesting police enforcement.	<i>Awaiting speed survey</i>
Studley 20mph Speed Limit	https://calnewwithout-pc.gov.uk/wp-content/uploads/2024/10/Studley-Speed-Limit-Assessment.pdf	Complete – came into effect on 20 th June Design work continues on the traffic calming measures and will be presented at a later time. £2,700 reserved for parish contribution to estimated cost of £9,000.	<i>Awaiting invoice</i>

Scheme	Background Links	Status	Any Actions
Ground Sockets for SID deployment	https://calnewwithout-pc.gov.uk/wp-content/uploads/2023/10/Sockets-to-support-deployment-of-SIDs.pdf	Sockets now installed. Parish contribution of £540 (30% of £1,800) in reserves. Highways are awaiting bill from Contractor.	<i>Awaiting delivery of key and spanner to enable use of ground anchor sockets and removable posts.</i>
Deer Warning Signs A4 & A342	https://calnewwithout-pc.gov.uk/wp-content/uploads/2024/04/Highways-improvement-form-Mile-Elm-Road-deer.pdf	Parish contribution of £840 (30% of £2,800) in reserves. Work complete & highways have interim bill of £2,098.23	<i>Awaiting invoice</i>

2.2 Schemes in Progress

Scheme	Background Links	Status	Any Actions
Speed Limit change to south of Sandy Lane	https://calnewwithout-pc.gov.uk/wp-content/uploads/2024/12/A342-A3102-TRO-Consultation.pdf	TRO Consultation Dec24. Being implemented as part of the A3102 Safer Roads Project. Parish committed contribution of £500 in reserves.	Action to follow up with Safer Roads Project for update on implementation, as well as proposals for A3102/A342 junction.

2.3 Schemes in Planning

Scheme	Background Links	Status	Any Actions
Old Derry Hill White Gates	https://calnewwithout-pc.gov.uk/wp-content/uploads/2024/12/Old-Derry-Hill-Highway-Improvement-Form-09Dec24.pdf	Request for 3 pairs of white gates and village nameplate endorsed by CWPC meeting 09Dec24 and submitted to LHFIG. Ball park estimate of £7,000. Highways have been tasked to consider improvements and prepare an estimate.	<i>Awaiting cost estimate from officers (expected in July).</i> <i>This will need to be taken to the Parish Council's September meeting for authorisation.</i>

2.4 Substantive Schemes

Calne Without Parish Council submitted two schemes for substantive highways scheme funding in 2025/26:

- Derry Hill Traffic Calming Scheme – *successful*.
- Derry Hill to Studley Shared Use Path – *unsuccessful*.

Results of Substantive Scheme bidding process can be found here:

<https://cms.wiltshire.gov.uk/documents/s236332/Appendix%20%20Substantive%20Highway%20Scheme%20Bid%20Scoring.pdf>

Derry Hill Traffic Calming Scheme:

Background:

- Feasibility Study - https://calnewwithout-pc.gov.uk/wp-content/uploads/2022/09/20220905-CWPC_Stage-2_Study-Area-1-V2.pdf
- Wiltshire Council Plans: <https://calnewwithout-pc.gov.uk/wp-content/uploads/2024/11/X.2-Traffic-Management-at-Derry-Hill.pdf>

The bid for substantive scheme funding was successful for improvements in Church Road and Studley Lane at five locations: Shop / Post Office, School, Church, War Memorial and junction with New Road.

The estimated cost is £61,358 (including contingency), with contributions from:

- £25,679 – Derry Hill & Studley Parish Council (in reserves)
- £5,000 – Wiltshire Council (LHFIG)
- £5,000 – Post Office Developer Contribution
- £25,679 – Wiltshire Council (substantive highways scheme funding).

Work on the ground is provisionally programmed for November.

We have requested an amendment to the design for the crossing by the church, to remove the additional build-out. This change can be accommodated and the finalised designs will be shared with the Parish Council in due course.

Derry Hill to Studley Shared Use Path:

Detailed design completed for surfacing/lighting the shared use path from Petty Lane to the A4:

<https://calnewwithout-pc.gov.uk/wp-content/uploads/2024/11/X.2-Petty-Lane-to-A4-Shared-Use-Path.pdf>.

The estimated cost is £71,625, including contingency.

The unsuccessful substantive highways scheme bid comprised:

- Parish Council contribution of £16,488
- LHFIG contribution of £5,000
- Balance of £50,137 sought through Substantive Scheme Funding.

The intention is to resubmit the project for Substantive Scheme Funding in future years. The challenge will be to allocate funding for a parish council contribution.

3. CURRENT ISSUES

Current issues that the Working Group is dealing with include:

3.1 School Parking

The Working Group will seek to find solutions to the ongoing traffic issues in Derry Hill during school drop-off and pick-up times (<https://calnewwithout-pc.gov.uk/wp-content/uploads/2024/12/Derry-Hill-School-parking-issues.pdf>).

Councillors attended a site meeting with PCSO Mark Cook outside the school on 16th June to observe traffic movements. Two members of the Working Group will visit Cherhill to observe how the school there is managing traffic flows. It is intended to then seek a further meeting with the school governors to explore the possibility of undertaking trials of potential solutions.

The possibility of implementing parking restrictions will also be considered.

The Group also considered the issue of vehicle movements from Petty Lane into Lansdowne Crescent East during the school run. A highway improvement request form for “give way” road markings has been prepared and is included on the agenda for the July Parish Council meeting.

3.2 Studley Lane

A request for double yellow lines on Studley Lane near the entrance to Studley Gardens was reviewed at the Calne Without Parish Council meeting in December: <https://calnewwithout-pc.gov.uk/wp-content/uploads/2024/12/Studley-Gardens-Highway-Improvement-Form-09Dec24.pdf>. It was resolved to not support the request at the time, but to review it again after the implementation of the new 20mph limit.

A related issue has been subsequently raised with the Council, identifying concerns about parked vehicles restricting the flow of traffic down Studley Lane, causing traffic to back up onto the A4.

The Working Group will continue to monitor the situation to determine whether parking restrictions are in the public interest.

3.3 Studley Corner and HGVs

The issue of boundary wall damage caused by HGVs has been previously raised and considered by Council: <https://calnewwithout-pc.gov.uk/wp-content/uploads/2024/04/Highways-improvement-request-form-93-Studley-completed-9-2-24.-redacted.pdf>

Following this, Wiltshire Council were asked to consider solutions and advised the following:

“The site has been inspected to consider options. Highways do not recommend kerbing as this is not in keeping with the street scene, nor is likely to deter large vehicles from mounting the kerb. A cheap solution would be to install some marker posts, to highlight the wall, but again this is unlikely to prevent large vehicles from mounting the verge.

“One alternative solution would be to install a bell bollard, (possibly two?) but these are more often used in urban settings and are likely to be expensive, upwards of £3,000 installed, inclusive of a road closure.”

The issue of HGVs ignoring the “Unsuitable for HGV” advisory signs has been raised again recently. The Working Group will make further contact with the plant hire company in Stanley.

3.4 Issues with Bus Stops

The Working Group will be seeking to address the following issues with local bus stops:

Electrical boxes taped up and awaiting repair:

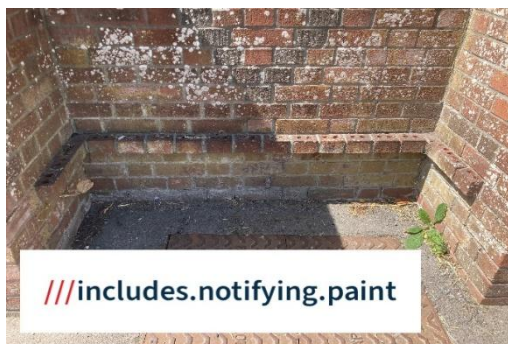


Studley Crossroads (Calne-bound)



Church Road (westbound)

Missing or broken benches at the bus stops at the A4 Pewsham Garage stops:



A4 London Road – northbound



A4 London Road – southbound

4. PROJECT UPDATES

4.1 Speed Indicator Devices

Reports from most recent deployments (February to April) are as follows:
Sandy Lane Northbound (30mph):

Date	20Feb25 to 04Apr25	15Apr24 to 12Jun24	15Dec22 to 21Feb23	Speed Survey 10Jan22 to 17Jan22
Avge speed mph	31.5	30.4	30.3	33.5
85%ile speed mph	34.9	34.9	35.1	38.5
Max speed mph	67.9	70.6	64.0	not recorded

Church Road Westbound (20mph):

Date	20Feb25 to 04Apr25	28Mar24 to 17Jun24	15Dec22 to 01Mar23	February 2020
Avge speed mph	21.1	21.4	21.3	23.5
85%ile speed mph	24.4	24.6	24.6	27.9
Max speed mph	43.2	47.6	49.5	not recorded

Available locations (once key and spanner received for ground anchor sockets):

Location	Speed Limit (mph)	Type of Mounting	What3Words location
Church Road westbound	20	Post & ground anchor socket	///clipboard.drifters.dates
Church Road eastbound	20	Post & ground anchor socket	///flasks.signs.arranges
Sandy Lane northbound (A342)	30	Reverse of street sign	///polices.hormones.herb
Sandy Lane southbound (A342)	30	Post & ground anchor socket	///fists.ruins.softly
Devizes Road northbound (A342)	40	Post & ground anchor socket	///testers.slouched.views
London Road southbound (A4)	40	Lighting column	///mirroring.depravity.internet

The Council's Speed Indicator Devices are currently installed for an eight-week period on the Devizes Road and the London Road.

4.2 NCN Route 403 Cross-Council Working Group

The Council continues to play a leading role in the National Cycle Network Route 403 Cross-Council Working Group. The most recent report to Calne Area LHFIG is included as Appendix A for reference.

The Information Board funded by Calne Without Parish Council has now been installed in the “Fisherman’s Car Park” off Studley Lane.

5. PRIORITIES FOR 2025/26

The Working Group’s priorities for 2025/26 are:

1. Deliver the substantive traffic calming scheme on Church Road.
2. Find ways to reduce the traffic chaos in Derry Hill at school drop-off and pick-up times.
3. Continue to focus on speed awareness and enforcement.
4. Get the bus stops in the parish to a better condition.
5. Find a way to finance a second substantive bid for the Derry Hill to Studley shared use path.
6. Review, assess and respond to issues raised by local residents.
7. Keep a watch on the proposed Chippenham expansion and be prepared to respond in respect of traffic impacts on the road network in our parish.

6. RECOMMENDATION

It is recommended that the Council notes this report.

Cllr John Barnes

Appendix A – NCN Route 403 Cross-Council Working Group Report to Calne Area LHFIFG Meeting of 16th May 2025

The Working Group was established in 2022 to “preserve and enhance the 403 Sustrans Route between Chippenham and Avebury as a multi-user route for active travel and leisure, well-being and commuting purposes, and to promote its use to, and care by, the local community.”

The Group comprises representatives from Calne Town Council, Derry Hill and Studley Parish Council, Bremhill Parish Council, Cherhill Parish Council, Chippenham Town Council, Wiltshire Council’s Rights of Way Team, Sustrans, Sustainable Calne and Cycle Chippenham.

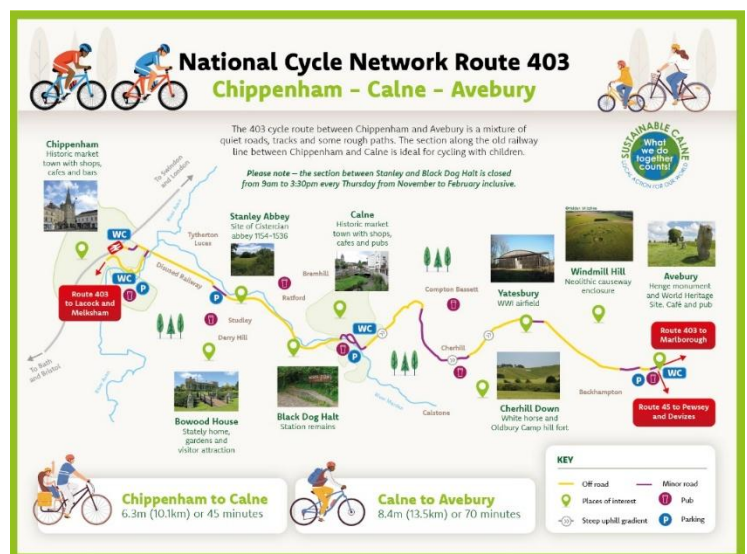
Recent progress includes:

In April 2025, volunteers led by Calne Without Parish Council carried out work to repair the surface of part of the cycleway to the east of Calne. Seven bags of aggregate were laid and compacted across a 30m muddy and rutted stretch.

Thanks are due to local town and parish councillors, Wiltshire Council’s Rights of Way Team for their help and Hills for facilitating access for the delivery of the materials.



An order has been placed for two information boards to be installed along the route, at the car park near Stanley Abbey, and in the centre of Calne. These have been funded by Calne Without Parish Council and Calne Town Council, with the artwork funded by Sustainable Calne.



Cllr John Barnes
Derry Hill and Studley Parish Council